

Anti-APEX1 antibody (160-240 Internal) (STJ95404)

STJ95404

GENERAL INFORMATION

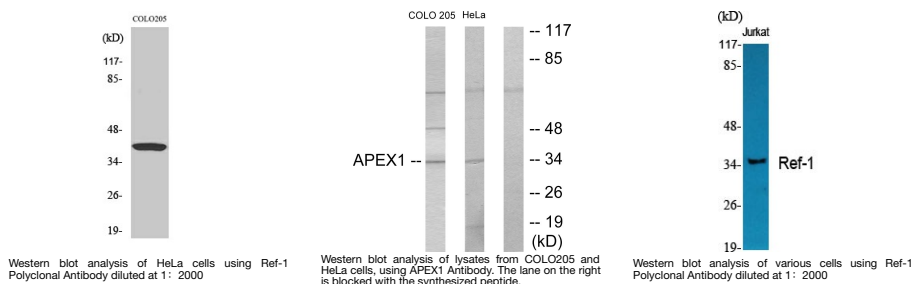
Product Type	Primary antibodies
Short Description	Rabbit polyclonal antibody anti-Dna (Apurinic Or Apyrimidinic Site Endonuclease (160-240 Internal) is suitable for use in Western Blot, Immunohistochemistry, Immunofluorescence and ELISA research applications.
Applications	WB, IHC-P, IF-P, ELISA
Host/Source	Rabbit
Reactivity	Human, Mouse, Rat

PRODUCT PROPERTIES

Clonality	Polyclonal
Clone ID	
Concentration	1 mg/mL
Conjugation	Unconjugated
Purification	The antibody was affinity-purified from rabbit anti-serum by affinity-chromatography.
Dilution Range	WB 1:500-1:2000 IHC 1:100-1:300 ELISA 1:10000
Formulation	PBS, 50% Glycerol, 0.5% BSA and 0.02% Sodium Azide.
Isotype	IgG
Storage Instruction	Store at -20°C for up to 1 year from the date of receipt, and avoid repeat freeze-thaw cycles.

TARGET INFORMATION

Gene ID	328
Gene Symbol	APEX1
Uniprot ID	APEX1_HUMAN
Immunogen	The antiserum was produced against synthesized peptide derived from human APEX1 at amino acid range 191-240
Immunogen Region	160-240 Internal
Specificity	APEX1 polyclonal antibody (Dna- (Apurinic Or Apyrimidinic Site Endonuclease) binds to endogenous Dna- (Apurinic Or Apyrimidinic Site Endonuclease at the amino acid region 160-240 Internal.
Immunogen Sequence	



This product is suitable for in-vitro studies under the RESEARCH USE ONLY [RUO] licence. This product must not be used as for diagnostic or other medical purposes.
 St John's Laboratory Ltd, Knowledge Dock Business Centre, University Way, London, E16 2RD | Tel: 0208 223 3081