

Anti-TMBIM1 antibody (220-300 C-Term) (STJ95403)

STJ95403

GENERAL INFORMATION

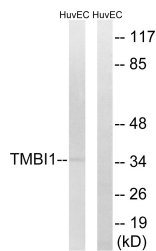
| | |
|--------------------------|---|
| Product Type | Primary antibodies |
| Short Description | Rabbit polyclonal antibody anti-Protein Lifeguard 3 (220-300 C-Term) is suitable for use in Western Blot, Immunohistochemistry, Immunofluorescence and ELISA research applications. |
| Applications | WB, IHC-P, IF-P, ELISA |
| Host/Source | Rabbit |
| Reactivity | Human, Mouse, Rat |

PRODUCT PROPERTIES

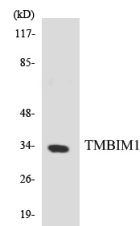
| | |
|----------------------------|--|
| Clonality | Polyclonal |
| Clone ID | |
| Concentration | 1 mg/mL |
| Conjugation | Unconjugated |
| Purification | The antibody was affinity-purified from rabbit anti-serum by affinity-chromatography. |
| Dilution Range | WB 1:500-1:2000 IHC 1:100-1:300 ELISA 1:40000 |
| Formulation | PBS, 50% Glycerol, 0.5% BSA and 0.02% Sodium Azide. |
| Isotype | IgG |
| Storage Instruction | Store at -20°C for up to 1 year from the date of receipt, and avoid repeat freeze-thaw cycles. |

TARGET INFORMATION

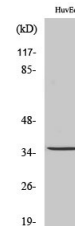
| | |
|---------------------------|---|
| Gene ID | 64114 |
| Gene Symbol | TMBIM1 |
| Uniprot ID | LFG3_HUMAN |
| Immunogen | The antiserum was produced against synthesized peptide derived from human TMBIM1 at amino acid range 251-300 |
| Immunogen Region | 220-300 C-Term |
| Specificity | TMBIM1 polyclonal antibody (Protein Lifeguard 3) binds to endogenous Protein Lifeguard 3 at the amino acid region 220-300 C-Term. |
| Immunogen Sequence | |



Western blot analysis of lysates from HUVEC cells, using TMBIM1 Antibody. The lane on the right is blocked with the synthesized peptide.



Western blot analysis of the lysates from K562 cells using TMBIM1 antibody.



Western blot analysis of various cells using RECS1 Polyclonal Antibody diluted at 1: 1000

This product is suitable for in-vitro studies under the RESEARCH USE ONLY [RUO] licence. This product must not be used as for diagnostic or other medical purposes.
St John's Laboratory Ltd, Knowledge Dock Business Centre, University Way, London, E16 2RD | Tel: 0208 223 3081