

Anti-RBBP5 antibody (190-270 Internal) (STJ95394)

STJ95394

GENERAL INFORMATION

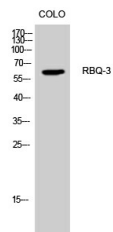
Product Type	Primary antibodies
Short Description	Rabbit polyclonal antibody anti-Retinoblastoma-Binding Protein 5 (190-270 Internal) is suitable for use in Western Blot and ELISA research applications.
Applications	WB, ELISA
Host/Source	Rabbit
Reactivity	Human, Mouse, Rat

PRODUCT PROPERTIES

Clonality	Polyclonal
Clone ID	
Concentration	1 mg/mL
Conjugation	Unconjugated
Purification	The antibody was affinity-purified from rabbit anti-serum by affinity-chromatography.
Dilution Range	WB 1:500-1:2000 ELISA 1:10000
Formulation	PBS, 50% Glycerol, 0.5% BSA and 0.02% Sodium Azide.
Isotype	IgG
Storage	Store at -20°C for up to 1 year from the date of receipt, and avoid repeat freeze-thaw cycles.
Instruction	

TARGET INFORMATION

Gene ID	5929
Gene Symbol	RBBP5
Uniprot ID	RBBP5_HUMAN
Immunogen	Synthesized peptide derived from RBQ-3. at amino acid range: 190-270
Immunogen Region	190-270 Internal
Specificity	RBBP5 polyclonal antibody (Retinoblastoma-Binding Protein 5) binds to endogenous Retinoblastoma-Binding Protein 5 at the amino acid region 190-270 Internal.
Immunogen Sequence	



Western blot analysis of CoLo cells using RBQ-3 Polyclonal Antibody cells nucleus extracted by Minute TM Cytoplasmic and Nuclear Fractionation kit (SC-003, Inventibiotech, MN, USA).

This product is suitable for in-vitro studies under the RESEARCH USE ONLY [RUO] licence. This product must not be used as for diagnostic or other medical purposes.
St John's Laboratory Ltd, Knowledge Dock Business Centre, University Way, London, E16 2RD | Tel: 0208 223 3081