

Anti-RBM34 antibody (320-400 C-Term) (STJ95393)

STJ95393

GENERAL INFORMATION

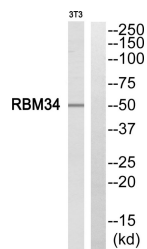
Product Type	Primary antibodies
Short Description	Rabbit polyclonal antibody anti-Rna-Binding Protein 34 (320-400 C-Term) is suitable for use in Western Blot, Immunohistochemistry, Immunofluorescence and ELISA research applications.
Applications	WB, IHC-P, IF-P, ELISA
Host/Source	Rabbit
Reactivity	Human, Mouse, Rat

PRODUCT PROPERTIES

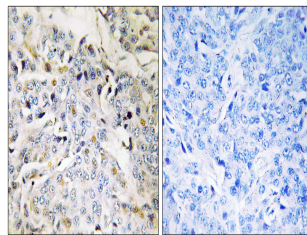
Clonality	Polyclonal
Clone ID	
Concentration	1 mg/mL
Conjugation	Unconjugated
Purification	The antibody was affinity-purified from rabbit anti-serum by affinity-chromatography.
Dilution Range	WB 1:500-1:2000 IHC 1:100-1:300 ELISA 1:20000
Formulation	PBS, 50% Glycerol, 0.5% BSA and 0.02% Sodium Azide.
Isotype	IgG
Storage Instruction	Store at -20°C for up to 1 year from the date of receipt, and avoid repeat freeze-thaw cycles.

TARGET INFORMATION

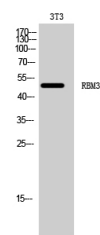
Gene ID	23029
Gene Symbol	RBM34
Uniprot ID	RBM34_HUMAN
Immunogen	The antiserum was produced against synthesized peptide derived from human RBM34 at amino acid range 345-394
Immunogen Region	320-400 C-Term
Specificity	RBM34 polyclonal antibody (Rna-Binding Protein 34) binds to endogenous Rna-Binding Protein 34 at the amino acid region 320-400 C-Term.
Immunogen Sequence	



Western blot analysis of RBM34 Antibody. The lane on the right is blocked with the RBM34 peptide.



Immunohistochemistry analysis of paraffin-embedded human breast carcinoma tissue, using RBM34 Antibody. The picture on the right is blocked with the synthesized peptide.



Western blot analysis of 3T3 cells using RBM34 Polyclonal Antibody cells nucleus extracted by Minute™ Cytoplasmic and Nuclear Fractionation kit (SC-003, Inventiotech, MN, USA).

This product is suitable for in-vitro studies under the RESEARCH USE ONLY [RUO] licence. This product must not be used as for diagnostic or other medical purposes.
St John's Laboratory Ltd, Knowledge Dock Business Centre, University Way, London, E16 2RD | Tel: 0208 223 3081