

Anti-RBM26 antibody (680-760 Internal) (STJ95392)

STJ95392

GENERAL INFORMATION

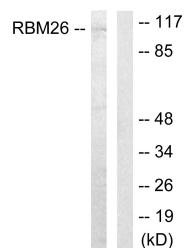
Product Type	Primary antibodies
Short Description	Rabbit polyclonal antibody anti-Rna-Binding Protein 26 (680-760 Internal) is suitable for use in Western Blot, Immunohistochemistry, Immunofluorescence and ELISA research applications.
Applications	WB, IHC-P, IF-P, ELISA
Host/Source	Rabbit
Reactivity	Human, Mouse

PRODUCT PROPERTIES

Clonality	Polyclonal
Clone ID	
Concentration	1 mg/mL
Conjugation	Unconjugated
Purification	The antibody was affinity-purified from rabbit anti-serum by affinity-chromatography.
Dilution Range	WB 1:500-1:2000 ELISA 1:10000
Formulation	PBS, 50% Glycerol, 0.5% BSA and 0.02% Sodium Azide.
Isotype	IgG
Storage Instruction	Store at -20°C for up to 1 year from the date of receipt, and avoid repeat freeze-thaw cycles.

TARGET INFORMATION

Gene ID	64062
Gene Symbol	RBM26
Uniprot ID	RBM26_HUMAN
Immunogen	The antiserum was produced against synthesized peptide derived from human RBM26 at amino acid range 711-760
Immunogen Region	680-760 Internal
Specificity	RBM26 polyclonal antibody (Rna-Binding Protein 26) binds to endogenous Rna-Binding Protein 26 at the amino acid region 680-760 Internal.
Immunogen Sequence	



Western blot analysis of lysates from Jurkat cells, using RBM26 Antibody. The lane on the right is blocked with the synthesized peptide.