

## Anti-SCAF8 antibody (550-630 Internal) (STJ95391)

STJ95391

### GENERAL INFORMATION

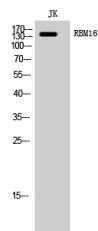
<b>Product Type</b>	Primary antibodies
<b>Short Description</b>	Rabbit polyclonal antibody anti-Sr-Related And Ctd-Associated Factor 8 (550-630 Internal) is suitable for use in Western Blot and ELISA research applications.
<b>Applications</b>	WB, ELISA
<b>Host/Source</b>	Rabbit
<b>Reactivity</b>	Human, Mouse, Rat

### PRODUCT PROPERTIES

<b>Clonality</b>	Polyclonal
<b>Clone ID</b>	
<b>Concentration</b>	1 mg/mL
<b>Conjugation</b>	Unconjugated
<b>Purification</b>	The antibody was affinity-purified from rabbit anti-serum by affinity-chromatography.
<b>Dilution Range</b>	WB 1:500-1:2000 ELISA 1:10000
<b>Formulation</b>	PBS, 50% Glycerol, 0.5% BSA and 0.02% Sodium Azide.
<b>Isotype</b>	IgG
<b>Storage</b>	Store at -20°C for up to 1 year from the date of receipt, and avoid repeat freeze-thaw cycles.
<b>Instruction</b>	

### TARGET INFORMATION

<b>Gene ID</b>	22828
<b>Gene Symbol</b>	SCAF8
<b>Uniprot ID</b>	SCAF8_HUMAN
<b>Immunogen</b>	Synthesized peptide derived from RBM16. at amino acid range: 550-630
<b>Immunogen Region</b>	550-630 Internal
<b>Region</b>	
<b>Specificity</b>	SCAF8 polyclonal antibody (Sr-Related And Ctd-Associated Factor 8) binds to endogenous Sr-Related And Ctd-Associated Factor 8 at the amino acid region 550-630 Internal.
<b>Immunogen Sequence</b>	



Western blot analysis of JK cells using RBM16 Polyclonal Antibody cells nucleus extracted by Minute TM Cytoplasmic and Nuclear Fractionation kit (SC-003, Inventibiotec, MN, USA).