

Anti-RASSF6 antibody (100-180 Internal) (STJ95378)

STJ95378

GENERAL INFORMATION

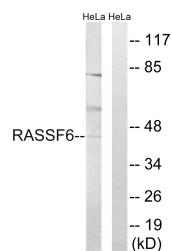
Product Type	Primary antibodies
Short Description	Rabbit polyclonal antibody anti-Ras Association Domain-Containing Protein 6 (100-180 Internal) is suitable for use in Western Blot and ELISA research applications.
Applications	WB, ELISA
Host/Source	Rabbit
Reactivity	Human, Rat, Mouse

PRODUCT PROPERTIES

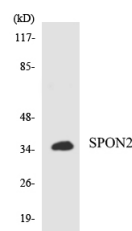
Clonality	Polyclonal
Clone ID	
Concentration	1 mg/mL
Conjugation	Unconjugated
Purification	The antibody was affinity-purified from rabbit anti-serum by affinity-chromatography.
Dilution Range	WB 1:500-1:2000 ELISA 1:10000
Formulation	PBS, 50% Glycerol, 0.5% BSA and 0.02% Sodium Azide.
Isotype	IgG
Storage	Store at -20°C for up to 1 year from the date of receipt, and avoid repeat freeze-thaw cycles.
Instruction	

TARGET INFORMATION

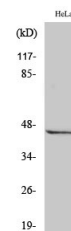
Gene ID	166824
Gene Symbol	RASSF6
Uniprot ID	RASF6_HUMAN
Immunogen	The antiserum was produced against synthesized peptide derived from human RASSF6 at amino acid range 129-178
Immunogen Region	100-180 Internal
Specificity	RASSF6 polyclonal antibody (Ras Association Domain-Containing Protein 6) binds to endogenous Ras Association Domain-Containing Protein 6 at the amino acid region 100-180 Internal.
Immunogen Sequence	



Western blot analysis of lysates from HeLa cells, using RASSF6 Antibody. The lane on the right is blocked with the synthesized peptide.



Western blot analysis of the lysates from K562 cells using RASSF6 antibody.



Western blot analysis of various cells using RASSF6 Polyclonal Antibody