

Anti-RASSF2 antibody (80-160 Internal) (STJ95376)

STJ95376

GENERAL INFORMATION

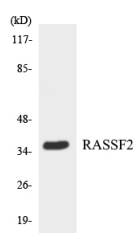
Product Type	Primary antibodies
Short Description	Rabbit polyclonal antibody anti-Ras Association Domain-Containing Protein 2 (80-160 Internal) is suitable for use in Western Blot and ELISA research applications.
Applications	WB, ELISA
Host/Source	Rabbit
Reactivity	Human, Mouse, Rat

PRODUCT PROPERTIES

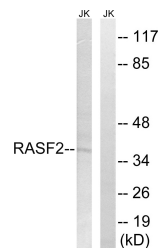
Clonality	Polyclonal
Clone ID	
Concentration	1 mg/mL
Conjugation	Unconjugated
Purification	The antibody was affinity-purified from rabbit anti-serum by affinity-chromatography.
Dilution Range	WB 1:500-1:2000 ELISA 1:20000
Formulation	PBS, 50% Glycerol, 0.5% BSA and 0.02% Sodium Azide.
Isotype	IgG
Storage	Store at -20°C for up to 1 year from the date of receipt, and avoid repeat freeze-thaw cycles.
Instruction	

TARGET INFORMATION

Gene ID	9770
Gene Symbol	RASSF2
Uniprot ID	RASF2_HUMAN
Immunogen	The antiserum was produced against synthesized peptide derived from human RASSF2 at amino acid range 109-158
Immunogen Region	80-160 Internal
Specificity	RASSF2 polyclonal antibody (Ras Association Domain-Containing Protein 2) binds to endogenous Ras Association Domain-Containing Protein 2 at the amino acid region 80-160 Internal.
Immunogen Sequence	



Western blot analysis of the lysates from HepG2 cells using RASSF2 antibody.



Western blot analysis of lysates from Jurkat cells, using RASSF2 Antibody. The lane on the right is blocked with the synthesized peptide.