

Anti-RASL10B antibody (80-160 Internal) (STJ95375)

STJ95375

GENERAL INFORMATION

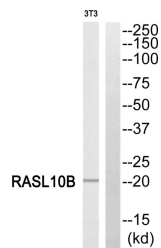
| | |
|--------------------------|---|
| Product Type | Primary antibodies |
| Short Description | Rabbit polyclonal antibody anti-Ras-Like Protein Family Member 10b (80-160 Internal) is suitable for use in Western Blot and ELISA research applications. |
| Applications | WB, ELISA |
| Host/Source | Rabbit |
| Reactivity | Human, Mouse |

PRODUCT PROPERTIES

| | |
|----------------------------|--|
| Clonality | Polyclonal |
| Clone ID | |
| Concentration | 1 mg/mL |
| Conjugation | Unconjugated |
| Purification | The antibody was affinity-purified from rabbit anti-serum by affinity-chromatography. |
| Dilution Range | WB 1:500-1:2000 ELISA 1:40000 |
| Formulation | PBS, 50% Glycerol, 0.5% BSA and 0.02% Sodium Azide. |
| Isotype | IgG |
| Storage Instruction | Store at -20°C for up to 1 year from the date of receipt, and avoid repeat freeze-thaw cycles. |

TARGET INFORMATION

| | |
|---------------------------|---|
| Gene ID | 91608 |
| Gene Symbol | RASL10B |
| Uniprot ID | RSLAB_HUMAN |
| Immunogen | Synthesized peptide derived from RASL10B. at amino acid range: 80-160 |
| Immunogen Region | 80-160 Internal |
| Specificity | RASL10B polyclonal antibody (Ras-Like Protein Family Member 10b) binds to endogenous Ras-Like Protein Family Member 10b at the amino acid region 80-160 Internal. |
| Immunogen Sequence | |



Western blot analysis of RASL10B Antibody. The lane on the right is blocked with the RASL10B peptide.

This product is suitable for in-vitro studies under the RESEARCH USE ONLY [RUO] licence. This product must not be used as for diagnostic or other medical purposes.
 St John's Laboratory Ltd, Knowledge Dock Business Centre, University Way, London, E16 2RD | Tel: 0208 223 3081