

## Anti-RAP2C antibody (70-150 Internal) (STJ95369)

STJ95369

### GENERAL INFORMATION

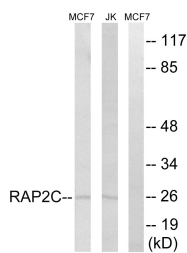
<b>Product Type</b>	Primary antibodies
<b>Short Description</b>	Rabbit polyclonal antibody anti-Ras-Related Protein Rap-2c (70-150 Internal) is suitable for use in Western Blot and ELISA research applications.
<b>Applications</b>	WB, ELISA
<b>Host/Source</b>	Rabbit
<b>Reactivity</b>	Human, Mouse

### PRODUCT PROPERTIES

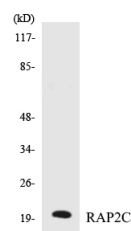
<b>Clonality</b>	Polyclonal
<b>Clone ID</b>	
<b>Concentration</b>	1 mg/mL
<b>Conjugation</b>	Unconjugated
<b>Purification</b>	The antibody was affinity-purified from rabbit anti-serum by affinity-chromatography.
<b>Dilution Range</b>	WB 1:500-1:2000 ELISA 1:5000
<b>Formulation</b>	PBS, 50% Glycerol, 0.5% BSA and 0.02% Sodium Azide.
<b>Isotype</b>	IgG
<b>Storage Instruction</b>	Store at -20°C for up to 1 year from the date of receipt, and avoid repeat freeze-thaw cycles.

### TARGET INFORMATION

<b>Gene ID</b>	57826
<b>Gene Symbol</b>	RAP2C
<b>Uniprot ID</b>	RAP2C_HUMAN
<b>Immunogen</b>	The antiserum was produced against synthesized peptide derived from human RAP2C at amino acid range 97-146
<b>Immunogen Region</b>	70-150 Internal
<b>Specificity</b>	RAP2C polyclonal antibody (Ras-Related Protein Rap-2c) binds to endogenous Ras-Related Protein Rap-2c at the amino acid region 70-150 Internal.
<b>Immunogen Sequence</b>	



Western blot analysis of lysates from Jurkat and MCF-7 cells, using RAP2C Antibody. The lane on the right is blocked with the synthesized peptide.



Western blot analysis of the lysates from K562 cells using RAP2C antibody.



Western blot analysis of various cells using Rap 2C Polyclonal Antibody diluted at 1: 500