

Anti-RANBP6 antibody (770-850 Internal) (STJ95365)

STJ95365

GENERAL INFORMATION

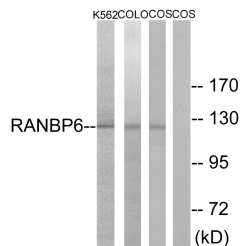
Product Type	Primary antibodies
Short Description	Rabbit polyclonal antibody anti-Ran-Binding Protein 6 (770-850 Internal) is suitable for use in Western Blot and ELISA research applications.
Applications	WB, ELISA
Host/Source	Rabbit
Reactivity	Human, Mouse, Rat, Monkey

PRODUCT PROPERTIES

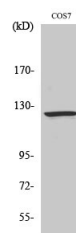
Clonality	Polyclonal
Clone ID	
Concentration	1 mg/mL
Conjugation	Unconjugated
Purification	The antibody was affinity-purified from rabbit anti-serum by affinity-chromatography.
Dilution Range	WB 1:500-1:2000 ELISA 1:10000
Formulation	PBS, 50% Glycerol, 0.5% BSA and 0.02% Sodium Azide.
Isotype	IgG
Storage Instruction	Store at -20°C for up to 1 year from the date of receipt, and avoid repeat freeze-thaw cycles.

TARGET INFORMATION

Gene ID	26953
Gene Symbol	RANBP6
Uniprot ID	RNBP6_HUMAN
Immunogen	The antiserum was produced against synthesized peptide derived from human RANBP6 at amino acid range 800-849
Immunogen Region	770-850 Internal
Specificity	RANBP6 polyclonal antibody (Ran-Binding Protein 6) binds to endogenous Ran-Binding Protein 6 at the amino acid region 770-850 Internal.
Immunogen Sequence	



Western blot analysis of lysates from COS7, K562, and COLO cells, using RANBP6 Antibody. The lane on the right is blocked with the synthesized peptide.



Western blot analysis of various cells using Ran BP-6 Polyclonal Antibody

This product is suitable for in-vitro studies under the RESEARCH USE ONLY [RUO] licence. This product must not be used as for diagnostic or other medical purposes.
St John's Laboratory Ltd, Knowledge Dock Business Centre, University Way, London, E16 2RD | Tel: 0208 223 3081