

Anti-RALY antibody (40-120 Internal) (STJ95362)

STJ95362

GENERAL INFORMATION

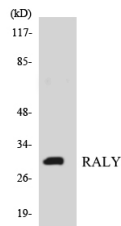
Product Type	Primary antibodies
Short Description	Rabbit polyclonal antibody anti-Rna-Binding Protein Raly (40-120 Internal) is suitable for use in Western Blot and ELISA research applications.
Applications	WB, ELISA
Host/Source	Rabbit
Reactivity	Human, Mouse, Rat

PRODUCT PROPERTIES

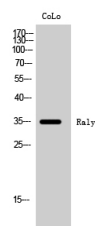
Clonality	Polyclonal
Clone ID	
Concentration	1 mg/mL
Conjugation	Unconjugated
Purification	The antibody was affinity-purified from rabbit anti-serum by affinity-chromatography.
Dilution Range	WB 1:500-1:2000 ELISA 1:10000
Formulation	PBS, 50% Glycerol, 0.5% BSA and 0.02% Sodium Azide.
Isotype	IgG
Storage Instruction	Store at -20°C for up to 1 year from the date of receipt, and avoid repeat freeze-thaw cycles.

TARGET INFORMATION

Gene ID	22913
Gene Symbol	RALY
Uniprot ID	RALY_HUMAN
Immunogen	The antiserum was produced against synthesized peptide derived from human RALY at amino acid range 71-120
Immunogen Region	40-120 Internal
Specificity	RALY polyclonal antibody (Rna-Binding Protein Raly) binds to endogenous Rna-Binding Protein Raly at the amino acid region 40-120 Internal.
Immunogen Sequence	



Western blot analysis of the lysates from HT-29 cells using RALY antibody.



Western blot analysis of CoLo cells using Raly Polyclonal Antibody cells nucleus extracted by Minute™ Cytoplasmic and Nuclear Fractionation kit (SC-003, InventiBiotech, MN, USA).

This product is suitable for in-vitro studies under the RESEARCH USE ONLY [RUO] licence. This product must not be used as for diagnostic or other medical purposes.
 St John's Laboratory Ltd, Knowledge Dock Business Centre, University Way, London, E16 2RD | Tel: 0208 223 3081