

Anti-AGER antibody (Internal) (STJ95358)

STJ95358

GENERAL INFORMATION

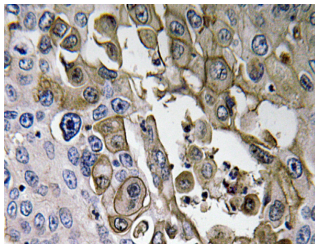
Product Type	Primary antibodies
Short Description	Rabbit polyclonal antibody anti-Advanced Glycosylation End Product-Specific Receptor (Internal) is suitable for use in Western Blot, Immunohistochemistry, Immunofluorescence and ELISA research applications.
Applications	WB, IHC-P, IF-P, ELISA
Host/Source	Rabbit
Reactivity	Human, Rat, Mouse

PRODUCT PROPERTIES

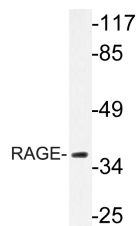
Clonality	Polyclonal
Clone ID	
Concentration	1 mg/mL
Conjugation	Unconjugated
Purification	The antibody was affinity-purified from rabbit anti-serum by affinity-chromatography.
Dilution Range	WB 1:500-1:2000 IHC 1:100-1:300 ELISA 1:20000
Formulation	PBS, 50% Glycerol, 0.5% BSA and 0.02% Sodium Azide.
Isotype	IgG
Storage Instruction	Store at -20°C for up to 1 year from the date of receipt, and avoid repeat freeze-thaw cycles.

TARGET INFORMATION

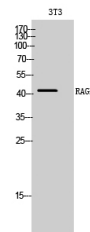
Gene ID	177
Gene Symbol	AGER
Uniprot ID	RAGE_HUMAN
Immunogen	The antiserum was produced against synthesized peptide derived from human RAGE at amino acid range 133-182
Immunogen Region	Internal
Specificity	AGER polyclonal antibody (Advanced Glycosylation End Product-Specific Receptor) binds to endogenous Advanced Glycosylation End Product-Specific Receptor at the amino acid region Internal.
Immunogen Sequence	



Immunohistochemistry analysis of RAGE antibody in paraffin-embedded human lung carcinoma tissue.



Western blot analysis of lysate from LOVO cells, using RAGE antibody.



Western blot analysis of 3T3 cells using RAGE Polyclonal Antibody diluted at 1: 1000

This product is suitable for in-vitro studies under the RESEARCH USE ONLY [RUO] licence. This product must not be used as for diagnostic or other medical purposes.
St John's Laboratory Ltd, Knowledge Dock Business Centre, University Way, London, E16 2RD | Tel: 0208 223 3081