

Anti-RRAGC antibody (280-360 C-Term) (STJ95357)

STJ95357

GENERAL INFORMATION

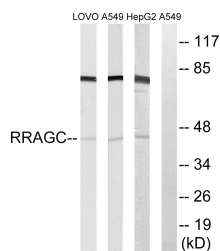
Product Type	Primary antibodies
Short Description	Rabbit polyclonal antibody anti-Ras-Related Gtp-Binding Protein C (280-360 C-Term) is suitable for use in Western Blot and ELISA research applications.
Applications	WB, ELISA
Host/Source	Rabbit
Reactivity	Human, Mouse, Rat

PRODUCT PROPERTIES

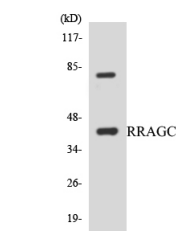
Clonality	Polyclonal
Clone ID	
Concentration	1 mg/mL
Conjugation	Unconjugated
Purification	The antibody was affinity-purified from rabbit anti-serum by affinity-chromatography.
Dilution Range	WB 1:500-1:2000 ELISA 1:10000
Formulation	PBS, 50% Glycerol, 0.5% BSA and 0.02% Sodium Azide.
Isotype	IgG
Storage Instruction	Store at -20°C for up to 1 year from the date of receipt, and avoid repeat freeze-thaw cycles.

TARGET INFORMATION

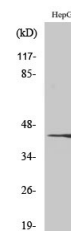
Gene ID	64121
Gene Symbol	RRAGC
Uniprot ID	RRAGC_HUMAN
Immunogen	The antiserum was produced against synthesized peptide derived from human RRAGC at amino acid range 302-351
Immunogen Region	280-360 C-Term
Specificity	RRAGC polyclonal antibody (Ras-Related Gtp-Binding Protein C) binds to endogenous Ras-Related Gtp-Binding Protein C at the amino acid region 280-360 C-Term.
Immunogen Sequence	



Western blot analysis of lysates from HepG2, A549, and LOVO cells, using RRAGC Antibody. The lane on the right is blocked with the synthesized peptide.



Western blot analysis of the lysates from HepG2 cells using RRAGC antibody.



Western blot analysis of various cells using Rag C Polyclonal Antibody.