

Anti-Rag A/B antibody (240-320 C-Term) (STJ95355)

STJ95355

GENERAL INFORMATION

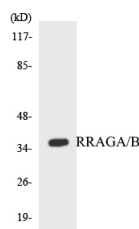
Product Type	Primary antibodies
Short Description	Rabbit polyclonal antibody anti-Ras-related GTP-binding protein A and Ras-related GTP-binding protein B (240-320 C-Term) is suitable for use in Western Blot, Immunohistochemistry, Immunofluorescence and ELISA research applications.
Applications	WB, IHC-P, IF-P, ELISA
Host/Source	Rabbit
Reactivity	Human, Mouse, Rat

PRODUCT PROPERTIES

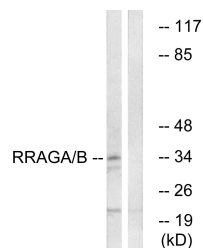
Clonality	Polyclonal
Clone ID	
Concentration	1 mg/mL
Conjugation	Unconjugated
Purification	The antibody was affinity-purified from rabbit anti-serum by affinity-chromatography.
Dilution	WB 1:500-1:2000
Range	IHC 1:100-1:300 ELISA 1:20000
Formulation	PBS, 50% Glycerol, 0.5% BSA and 0.02% Sodium Azide.
Isotype	IgG
Storage Instruction	Store at -20°C for up to 1 year from the date of receipt, and avoid repeat freeze-thaw cycles.

TARGET INFORMATION

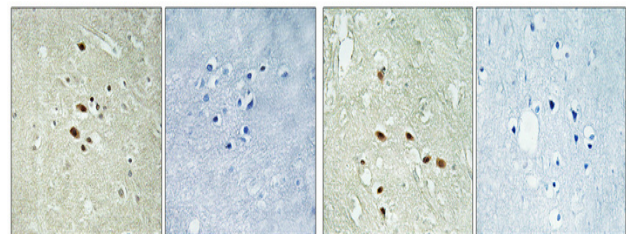
Gene ID	10325 10670
Gene Symbol	RRAGB RRAGA
Uniprot ID	RRAGB_HUMAN RRAGA_HUMAN
Immunogen	The antiserum was produced against synthesized peptide derived from human RRAGA/B at amino acid range 264-313
Immunogen Region	240-320 C-Term
Specificity	Rag A/B polyclonal antibody (Ras-related GTP-binding protein A and Ras-related GTP-binding protein B) binds to endogenous Ras-related GTP-binding protein A and Ras-related GTP-binding protein B at the amino acid region 240-320 C-Term.
Immunogen Sequence	



Western blot analysis of the lysates from HepG2 cells using RRAGA/B antibody.



Western blot analysis of lysates from HepG2 cells, using RRAGA/B Antibody. The lane on the right is blocked with the synthesized peptide.



Immunohistochemical analysis of paraffin-embedded Human brain. Antibody was diluted at 1:100 (4°C overnight). High-pressure and temperature Tris-EDTA, pH8.0 was used for antigen retrieval. Negative control (right) obtained from antibody was pre-absorbed by immunogen peptide.

Immunohistochemical analysis of paraffin-embedded Human brain. Antibody was diluted at 1:100 (4°C overnight). High-pressure and temperature Tris-EDTA, pH8.0 was used for antigen retrieval. Negative control (right) obtained from antibody was pre-absorbed by immunogen peptide.

This product is suitable for in-vitro studies under the RESEARCH USE ONLY [RUO] licence. This product must not be used as for diagnostic or other medical purposes.
St John's Laboratory Ltd, Knowledge Dock Business Centre, University Way, London, E16 2RD | Tel: 0208 223 3081