

Anti-BRAF antibody (700-780) (STJ95350)

STJ95350

GENERAL INFORMATION

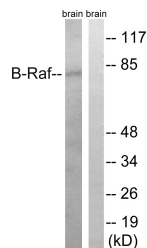
Product Type	Primary antibodies
Short Description	Rabbit polyclonal antibody anti-Serine/Threonine-Protein Kinase B-Raf (700-780) is suitable for use in Western Blot and ELISA research applications.
Applications	WB, ELISA
Host/Source	Rabbit
Reactivity	Human, Mouse, Rat

PRODUCT PROPERTIES

Clonality	Polyclonal
Clone ID	
Concentration	1 mg/mL
Conjugation	Unconjugated
Purification	The antibody was affinity-purified from rabbit anti-serum by affinity-chromatography.
Dilution Range	WB 1:500-1:2000 ELISA 1:5000
Formulation	PBS, 50% Glycerol, 0.5% BSA and 0.02% Sodium Azide.
Isotype	IgG
Storage	Store at -20°C for up to 1 year from the date of receipt, and avoid repeat freeze-thaw cycles.
Instruction	

TARGET INFORMATION

Gene ID	673
Gene Symbol	BRAF
Uniprot ID	BRAF_HUMAN
Immunogen	The antiserum was produced against synthesized peptide derived from human BRAF1 at amino acid range 717-766
Immunogen Region	700-780
Specificity	BRAF polyclonal antibody (Serine/Threonine-Protein Kinase B-Raf) binds to endogenous Serine/Threonine-Protein Kinase B-Raf at the amino acid region 700-780.
Immunogen Sequence	



Western blot analysis of lysates from rat brain, using B-Raf Antibody. The lane on the right is blocked with the synthesized peptide.