

Anti-RAF1 antibody (30-110) (STJ95344)

STJ95344

GENERAL INFORMATION

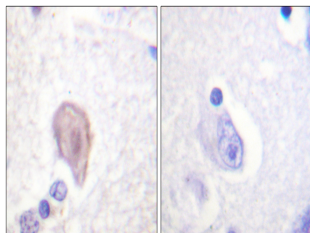
Product Type	Primary antibodies
Short Description	Rabbit polyclonal antibody anti-Raf Proto-Oncogene Serine/Threonine-Protein Kinase (30-110) is suitable for use in Western Blot, Immunohistochemistry, Immunofluorescence and ELISA research applications.
Applications	WB, IHC-P, IF-P, ELISA
Host/Source	Rabbit
Reactivity	Human, Mouse, Rat

PRODUCT PROPERTIES

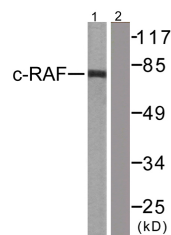
Clonality	Polyclonal
Clone ID	
Concentration	1 mg/mL
Conjugation	Unconjugated
Purification	The antibody was affinity-purified from rabbit anti-serum by affinity-chromatography.
Dilution Range	WB 1:500-1:2000 IHC 1:100-1:300 ELISA 1:5000
Formulation	PBS, 50% Glycerol, 0.5% BSA and 0.02% Sodium Azide.
Isotype	IgG
Storage Instruction	Store at -20°C for up to 1 year from the date of receipt, and avoid repeat freeze-thaw cycles.

TARGET INFORMATION

Gene ID	5894
Gene Symbol	RAF1
Uniprot ID	RAF1_HUMAN
Immunogen Region	The antiserum was produced against synthesized peptide derived from human C-RAF at amino acid range 11-60 30-110
Specificity	RAF1 polyclonal antibody (Raf Proto-Oncogene Serine/Threonine-Protein Kinase) binds to endogenous Raf Proto-Oncogene Serine/Threonine-Protein Kinase at the amino acid region 30-110.
Immunogen Sequence	



Immunohistochemistry analysis of paraffin-embedded human brain tissue, using C-RAF Antibody. The picture on the right is blocked with the synthesized peptide.



Western blot analysis of lysates from 293 cells, treated with PMA 125ng/ml 30', using C-RAF Antibody. The lane on the right is blocked with the synthesized peptide.



Western blot analysis of various cells using Raf-1 Polyclonal Antibody diluted at 1: 2000