

## Anti-RAD52 antibody (40-120) (STJ95334)

STJ95334

### GENERAL INFORMATION

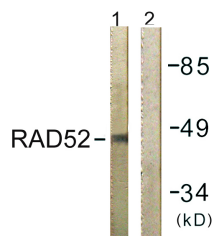
<b>Product Type</b>	Primary antibodies
<b>Short Description</b>	Rabbit polyclonal antibody anti-Dna Repair Protein Rad52 Homolog (40-120) is suitable for use in Western Blot, Immunohistochemistry, Immunofluorescence, Immunocytochemistry and ELISA research applications.
<b>Applications</b>	WB, IHC-P, IF, ICC, ELISA
<b>Host/Source</b>	Rabbit
<b>Reactivity</b>	Human, Mouse

### PRODUCT PROPERTIES

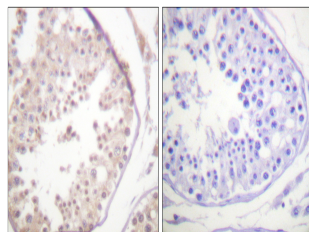
<b>Clonality</b>	Polyclonal
<b>Clone ID</b>	
<b>Concentration</b>	1 mg/mL
<b>Conjugation</b>	Unconjugated
<b>Purification</b>	The antibody was affinity-purified from rabbit anti-serum by affinity-chromatography.
<b>Dilution Range</b>	WB 1:500-1:2000 IHC 1:100-1:300 IF 1:200-1:1000 ELISA 1:10000
<b>Formulation</b>	PBS, 50% Glycerol, 0.5% BSA and 0.02% Sodium Azide.
<b>Isotype</b>	IgG
<b>Storage Instruction</b>	Store at -20°C for up to 1 year from the date of receipt, and avoid repeat freeze-thaw cycles.

### TARGET INFORMATION

<b>Gene ID</b>	5893
<b>Gene Symbol</b>	RAD52
<b>Uniprot ID</b>	RAD52_HUMAN
<b>Immunogen</b>	The antiserum was produced against synthesized peptide derived from human RAD52 at amino acid range 70-119
<b>Immunogen Region</b>	40-120
<b>Specificity</b>	RAD52 polyclonal antibody (Dna Repair Protein Rad52 Homolog) binds to endogenous Dna Repair Protein Rad52 Homolog at the amino acid region 40-120.
<b>Immunogen Sequence</b>	



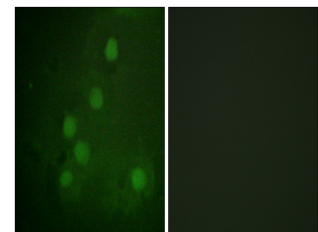
Western blot analysis of lysates from 293 cells, using RAD52 Antibody. The lane on the right is blocked with the synthesized peptide.



Immunohistochemistry analysis of paraffin-embedded human testis tissue, using RAD52 Antibody. The picture on the right is blocked with the synthesized peptide.



Western blot analysis of 293 cells using Rad52 Polyclonal Antibody cells nucleus extracted by Minute TM Cytoplasmic and Nuclear Fractionation kit (SC-003, Inventibiotec, MN, USA).



Immunofluorescence analysis of COS7 cells, using RAD52 Antibody. The picture on the right is blocked with the synthesized peptide.

This product is suitable for in-vitro studies under the RESEARCH USE ONLY [RUO] licence. This product must not be used as for diagnostic or other medical purposes.  
St John's Laboratory Ltd, Knowledge Dock Business Centre, University Way, London, E16 2RD | Tel: 0208 223 3081