

## Anti-RAD51D antibody (100-180 Internal) (STJ95333)

STJ95333

### GENERAL INFORMATION

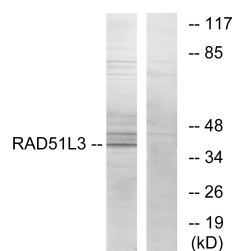
|                          |  |
|--------------------------|--|
| <b>Product Type</b>      | Primary antibodies   |
| <b>Short Description</b> | Rabbit polyclonal antibody anti-Dna Repair Protein Rad51 Homolog 4 (100-180 Internal) is suitable for use in Western Blot, Immunohistochemistry, Immunofluorescence and ELISA research applications. |
| <b>Applications</b>      | WB, IHC-P, IF-P, ELISA   |
| <b>Host/Source</b>       | Rabbit   |
| <b>Reactivity</b>        | Human, Rat, Mouse  |

### PRODUCT PROPERTIES

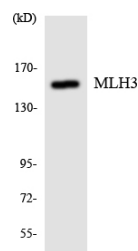
|                            |  |
|----------------------------|--|
| <b>Clonality</b>           | Polyclonal   |
| <b>Clone ID</b>            |  |
| <b>Concentration</b>       | 1 mg/mL  |
| <b>Conjugation</b>         | Unconjugated   |
| <b>Purification</b>        | The antibody was affinity-purified from rabbit anti-serum by affinity-chromatography.          |
| <b>Dilution</b>            | WB 1:500-1:2000  |
| <b>Range</b>               | IHC 1:100-1:300<br>ELISA 1:20000   |
| <b>Formulation</b>         | PBS, 50% Glycerol, 0.5% BSA and 0.02% Sodium Azide.  |
| <b>Isotype</b>             | IgG  |
| <b>Storage Instruction</b> | Store at -20°C for up to 1 year from the date of receipt, and avoid repeat freeze-thaw cycles. |

### TARGET INFORMATION

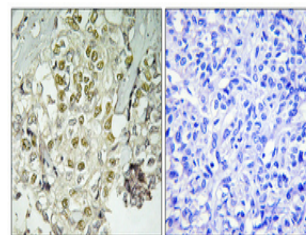
|                           |   |
|---------------------------|---|
| <b>Gene ID</b>            | 5892  |
| <b>Gene Symbol</b>        | <a href="#">RAD51D</a>  |
| <b>Uniprot ID</b>         | <a href="#">RA51D_HUMAN</a>   |
| <b>Immunogen</b>          | The antiserum was produced against synthesized peptide derived from human RAD51L3 at amino acid range 131-180   |
| <b>Immunogen Region</b>   | 100-180 Internal  |
| <b>Specificity</b>        | RAD51D polyclonal antibody (Dna Repair Protein Rad51 Homolog 4) binds to endogenous Dna Repair Protein Rad51 Homolog 4 at the amino acid region 100-180 Internal. |
| <b>Immunogen Sequence</b> |   |



Western blot analysis of lysates from Jurkat cells, using RAD51L3 Antibody. The lane on the right is blocked with the synthesized peptide.



Western blot analysis of the lysates from Jurkat cells using MLH3 antibody.



Immunohistochemical analysis of paraffin-embedded Human lung cancer. Antibody was diluted at 1:100 (4°C overnight). High-pressure and temperature Tris-EDTA, pH8.0 was used for antigen retrieval. Negative control (right) obtained from antibody was pre-absorbed by immunogen peptide.

This product is suitable for in-vitro studies under the RESEARCH USE ONLY [RUO] licence. This product must not be used as for diagnostic or other medical purposes.  
St John's Laboratory Ltd, Knowledge Dock Business Centre, University Way, London, E16 2RD | Tel: 0208 223 3081