

## Anti-RAD51C antibody (130-210 Internal) (STJ95332)

STJ95332

### GENERAL INFORMATION

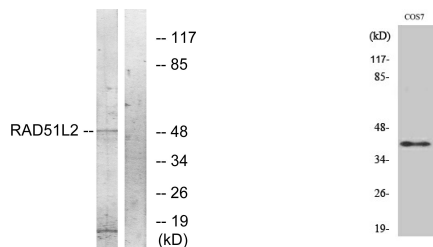
|                          |   |
|--------------------------|---|
| <b>Product Type</b>      | Primary antibodies  |
| <b>Short Description</b> | Rabbit polyclonal antibody anti-Dna Repair Protein Rad51 Homolog 3 (130-210 Internal) is suitable for use in Western Blot, Immunohistochemistry, Immunofluorescence, Immunocytochemistry and ELISA research applications. |
| <b>Applications</b>      | WB, IHC-P, IF, ICC, ELISA   |
| <b>Host/Source</b>       | Rabbit  |
| <b>Reactivity</b>        | Human, Monkey   |

### PRODUCT PROPERTIES

|                            |  |
|----------------------------|--|
| <b>Clonality</b>           | Polyclonal   |
| <b>Clone ID</b>            |  |
| <b>Concentration</b>       | 1 mg/mL  |
| <b>Conjugation</b>         | Unconjugated   |
| <b>Purification</b>        | The antibody was affinity-purified from rabbit anti-serum by affinity-chromatography.          |
| <b>Dilution Range</b>      | WB 1:500-1:2000<br>IHC 1:100-1:300<br>IF 1:200-1:1000<br>ELISA 1:5000                          |
| <b>Formulation</b>         | PBS, 50% Glycerol, 0.5% BSA and 0.02% Sodium Azide.  |
| <b>Isotype</b>             | IgG  |
| <b>Storage Instruction</b> | Store at -20°C for up to 1 year from the date of receipt, and avoid repeat freeze-thaw cycles. |

### TARGET INFORMATION

|                           |   |
|---------------------------|---|
| <b>Gene ID</b>            | 5889  |
| <b>Gene Symbol</b>        | RAD51C  |
| <b>Uniprot ID</b>         | RA51C_HUMAN   |
| <b>Immunogen</b>          | The antiserum was produced against synthesized peptide derived from human RAD51C at amino acid range 161-210  |
| <b>Immunogen Region</b>   | 130-210 Internal  |
| <b>Specificity</b>        | RAD51C polyclonal antibody (Dna Repair Protein Rad51 Homolog 3) binds to endogenous Dna Repair Protein Rad51 Homolog 3 at the amino acid region 130-210 Internal. |
| <b>Immunogen Sequence</b> |   |



Western blot analysis of lysates from COS7 cells, using RAD51L2 Antibody. The lane on the right is blocked with the synthesized peptide.

Western blot analysis of various cells using Rad51C Polyclonal Antibody cells nucleus extracted by Minute TM Cytoplasmic and Nuclear Fractionation kit (SC-003, Inventibiotech, MN, USA).

This product is suitable for in-vitro studies under the RESEARCH USE ONLY [RUO] licence. This product must not be used as for diagnostic or other medical purposes.  
St John's Laboratory Ltd, Knowledge Dock Business Centre, University Way, London, E16 2RD | Tel: 0208 223 3081