

Anti-RAD51B antibody (180-260 Internal) (STJ95331)

STJ95331

GENERAL INFORMATION

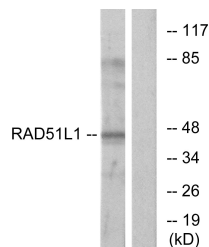
Product Type	Primary antibodies
Short Description	Rabbit polyclonal antibody anti-Dna Repair Protein Rad51 Homolog 2 (180-260 Internal) is suitable for use in Western Blot, Immunohistochemistry, Immunofluorescence and ELISA research applications.
Applications	WB, IHC-P, IF-P, ELISA
Host/Source	Rabbit
Reactivity	Human, Mouse, Monkey

PRODUCT PROPERTIES

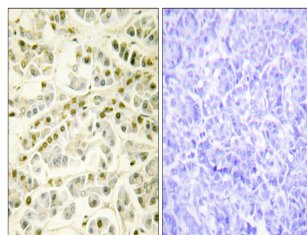
Clonality	Polyclonal
Clone ID	
Concentration	1 mg/mL
Conjugation	Unconjugated
Purification	The antibody was affinity-purified from rabbit anti-serum by affinity-chromatography.
Dilution Range	WB 1:500-1:2000 IHC 1:100-1:300 ELISA 1:40000
Formulation	PBS, 50% Glycerol, 0.5% BSA and 0.02% Sodium Azide.
Isotype	IgG
Storage Instruction	Store at 20°C for up to 1 year from the date of receipt, and avoid repeat freeze-thaw cycles.

TARGET INFORMATION

Gene ID	5890
Gene Symbol	RAD51B
Uniprot ID	RA51B_HUMAN
Immunogen	The antiserum was produced against synthesized peptide derived from human RAD51L1 at amino acid range 201-250
Immunogen Region	180-260 Internal
Specificity	RAD51B polyclonal antibody (Dna Repair Protein Rad51 Homolog 2) binds to endogenous Dna Repair Protein Rad51 Homolog 2 at the amino acid region 180-260 Internal.
Immunogen Sequence	



Western blot analysis of lysates from COS7 cells, using RAD51L1 Antibody. The lane on the right is blocked with the synthesized peptide.



Immunohistochemistry analysis of paraffin-embedded human pancreas tissue, using RAD51L1 Antibody. The picture on the right is blocked with the synthesized peptide.