

## Anti-RAD50 antibody (650-730 Internal) (STJ95328)

STJ95328

### GENERAL INFORMATION

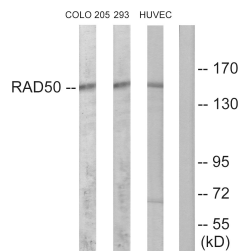
<b>Product Type</b>	Primary antibodies
<b>Short Description</b>	Rabbit polyclonal antibody anti-Dna Repair Protein Rad50 (650-730 Internal) is suitable for use in Western Blot, Immunohistochemistry, Immunofluorescence and ELISA research applications.
<b>Applications</b>	WB, IHC-P, IF-P, ELISA
<b>Host/Source</b>	Rabbit
<b>Reactivity</b>	Human, Mouse, Rat

### PRODUCT PROPERTIES

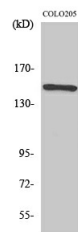
<b>Clonality</b>	Polyclonal
<b>Clone ID</b>	
<b>Concentration</b>	1 mg/mL
<b>Conjugation</b>	Unconjugated
<b>Purification</b>	The antibody was affinity-purified from rabbit anti-serum by affinity-chromatography.
<b>Dilution Range</b>	WB 1:500-1:2000 IHC 1:100-1:300 ELISA 1:20000
<b>Formulation</b>	PBS, 50% Glycerol, 0.5% BSA and 0.02% Sodium Azide.
<b>Isotype</b>	IgG
<b>Storage Instruction</b>	Store at -20°C for up to 1 year from the date of receipt, and avoid repeat freeze-thaw cycles.

### TARGET INFORMATION

<b>Gene ID</b>	10111
<b>Gene Symbol</b>	<a href="#">RAD50</a>
<b>Uniprot ID</b>	<a href="#">RAD50_HUMAN</a>
<b>Immunogen</b>	The antiserum was produced against synthesized peptide derived from human RAD50 at amino acid range 681-730
<b>Immunogen Region</b>	650-730 Internal
<b>Specificity</b>	RAD50 polyclonal antibody (Dna Repair Protein Rad50) binds to endogenous Dna Repair Protein Rad50 at the amino acid region 650-730 Internal.
<b>Immunogen Sequence</b>	



Western blot analysis of lysates from COLO205, 293, and HUVEC cells, using RAD50 Antibody. The lane on the right is blocked with the synthesized peptide.



Western blot analysis of various cells using Rad50 Polyclonal Antibody diluted at 1:1000 cells nucleus extracted by Minute TM Cytoplasmic and Nuclear Fractionation kit (SC-003, Inventibiotec, MN, USA).