

Anti-RAD18 antibody (270-350 Internal) (STJ95324)

STJ95324

GENERAL INFORMATION

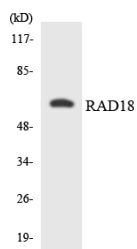
Product Type	Primary antibodies
Short Description	Rabbit polyclonal antibody anti-E3 Ubiquitin-Protein Ligase Rad18 (270-350 Internal) is suitable for use in Western Blot and ELISA research applications.
Applications	WB, ELISA
Host/Source	Rabbit
Reactivity	Human, Rat

PRODUCT PROPERTIES

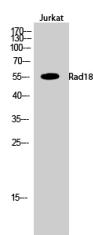
Clonality	Polyclonal
Clone ID	
Concentration	1 mg/mL
Conjugation	Unconjugated
Purification	The antibody was affinity-purified from rabbit anti-serum by affinity-chromatography.
Dilution Range	WB 1:500-1:2000 ELISA 1:40000
Formulation	PBS, 50% Glycerol, 0.5% BSA and 0.02% Sodium Azide.
Isotype	IgG
Storage Instruction	Store at -20°C for up to 1 year from the date of receipt, and avoid repeat freeze-thaw cycles.

TARGET INFORMATION

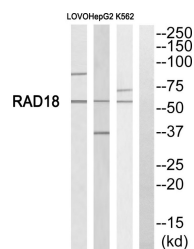
Gene ID	56852
Gene Symbol	RAD18
Uniprot ID	RAD18_HUMAN
Immunogen	The antiserum was produced against synthesized peptide derived from human RAD18 at amino acid range 301-350
Immunogen Region	270-350 Internal
Specificity	RAD18 polyclonal antibody (E3 Ubiquitin-Protein Ligase Rad18) binds to endogenous E3 Ubiquitin-Protein Ligase Rad18 at the amino acid region 270-350 Internal.
Immunogen Sequence	



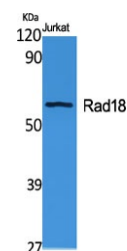
Western blot analysis of the lysates from COLO205 cells using RAD18 antibody.



Western blot analysis of Jurkat cells nucleus using Rad18 Polyclonal Antibody cells nucleus extracted by Minute TM Cytoplasmic and Nuclear Fractionation kit (SC-003, Inventiotech, MN, USA).



Western blot analysis of RAD18 Antibody. The lane on the right is blocked with the RAD18 peptide.



Western blot analysis of various cells using Rad18 Polyclonal Antibody cells nucleus extracted by Minute TM Cytoplasmic and Nuclear Fractionation kit (SC-003, Inventiotech, MN, USA).

This product is suitable for in-vitro studies under the RESEARCH USE ONLY [RUO] licence. This product must not be used as for diagnostic or other medical purposes.
St John's Laboratory Ltd, Knowledge Dock Business Centre, University Way, London, E16 2RD | Tel: 0208 223 3081