

Anti-RAD17 antibody (590-670) (STJ95322)

STJ95322

GENERAL INFORMATION

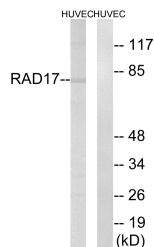
Product Type	Primary antibodies
Short Description	Rabbit polyclonal antibody anti-Cell Cycle Checkpoint Protein Rad17 (590-670) is suitable for use in Western Blot, Immunohistochemistry, Immunofluorescence, Immunocytochemistry and ELISA research applications.
Applications	WB, IHC-P, IF, ICC, ELISA
Host/Source	Rabbit
Reactivity	Human, Mouse

PRODUCT PROPERTIES

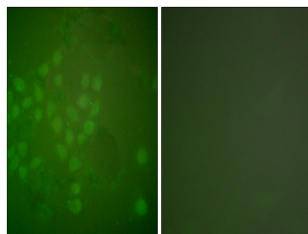
Clonality	Polyclonal
Clone ID	
Concentration	1 mg/mL
Conjugation	Unconjugated
Purification	The antibody was affinity-purified from rabbit anti-serum by affinity-chromatography.
Dilution Range	WB 1:500-1:2000 IHC 1:100-1:300 IF 1:200-1:1000 ELISA 1:10000
Formulation	PBS, 50% Glycerol, 0.5% BSA and 0.02% Sodium Azide.
Isotype	IgG
Storage Instruction	Store at -20°C for up to 1 year from the date of receipt, and avoid repeat freeze-thaw cycles.

TARGET INFORMATION

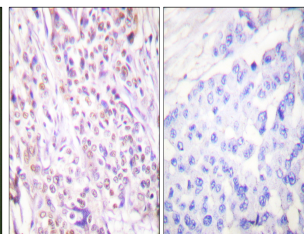
Gene ID	5884
Gene Symbol	RAD17
Uniprot ID	RAD17_HUMAN
Immunogen	The antiserum was produced against synthesized peptide derived from human RAD17 at amino acid range 621-670
Immunogen Region	590-670
Specificity	RAD17 polyclonal antibody (Cell Cycle Checkpoint Protein Rad17) binds to endogenous Cell Cycle Checkpoint Protein Rad17 at the amino acid region 590-670.
Immunogen Sequence	



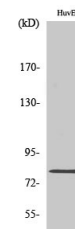
Western blot analysis of lysates from HUVEC cells, using RAD17 Antibody. The lane on the right is blocked with the synthesized peptide.



Immunofluorescence analysis of A549 cells, using RAD17 Antibody. The picture on the right is blocked with the synthesized peptide.



Immunohistochemistry analysis of paraffin-embedded human breast carcinoma tissue, using RAD17 Antibody. The picture on the right is blocked with the synthesized peptide.



Western blot analysis of various cells using Rad17 Polyclonal Antibody

This product is suitable for in-vitro studies under the RESEARCH USE ONLY [RUO] licence. This product must not be used as for diagnostic or other medical purposes.
St John's Laboratory Ltd, Knowledge Dock Business Centre, University Way, London, E16 2RD | Tel: 0208 223 3081