

Anti-RACGAP1 antibody (330-410) (STJ95318)

STJ95318

GENERAL INFORMATION

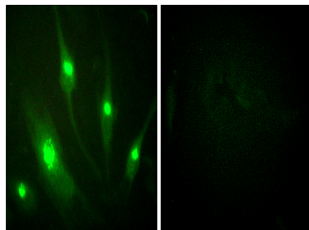
Product Type	Primary antibodies
Short Description	Rabbit polyclonal antibody anti-Rac Gtpase-Activating Protein 1 (330-410) is suitable for use in Western Blot, Immunohistochemistry, Immunofluorescence, Immunocytochemistry and ELISA research applications.
Applications	WB, IHC-P, IF, ICC, ELISA
Host/Source	Rabbit
Reactivity	Human, Mouse, Rat, Monkey

PRODUCT PROPERTIES

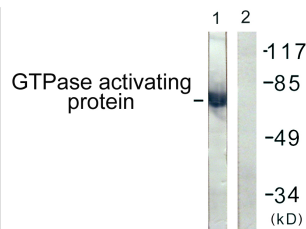
Clonality	Polyclonal
Clone ID	
Concentration	1 mg/mL
Conjugation	Unconjugated
Purification	The antibody was affinity-purified from rabbit anti-serum by affinity-chromatography.
Dilution Range	WB 1:500-1:2000 IHC 1:100-1:300 IF 1:200-1:1000 ELISA 1:40000
Formulation	PBS, 50% Glycerol, 0.5% BSA and 0.02% Sodium Azide.
Isotype	IgG
Storage Instruction	Store at -20°C for up to 1 year from the date of receipt, and avoid repeat freeze-thaw cycles.

TARGET INFORMATION

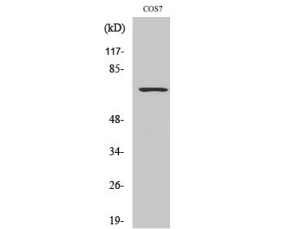
Gene ID	29127
Gene Symbol	RACGAP1
Uniprot ID	RGAP1_HUMAN
Immunogen	The antiserum was produced against synthesized peptide derived from human GTPase Activating Protein at amino acid range 353-402
Immunogen Region	330-410
Specificity	RACGAP1 polyclonal antibody (Rac Gtpase-Activating Protein 1) binds to endogenous Rac Gtpase-Activating Protein 1 at the amino acid region 330-410.
Immunogen Sequence	



Immunofluorescence analysis of HeLa cells, using GTPase Activating Protein Antibody. The picture on the right is blocked with the synthesized peptide.



Western blot analysis of lysates from COS7 cells, using GTPase Activating Protein Antibody. The lane on the right is blocked with the synthesized peptide.



Western blot analysis of various cells using Rac GAP1 Polyclonal Antibody

This product is suitable for in-vitro studies under the RESEARCH USE ONLY [RUO] licence. This product must not be used as for diagnostic or other medical purposes.
St John's Laboratory Ltd, Knowledge Dock Business Centre, University Way, London, E16 2RD | Tel: 0208 223 3081