

Anti-AGFG2 antibody (60-140 Internal) (STJ95316)

STJ95316

GENERAL INFORMATION

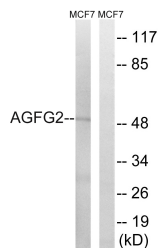
Product Type	Primary antibodies
Short Description	Rabbit polyclonal antibody anti-Arf-Gap Domain And Fg Repeat-Containing Protein 2 (60-140 Internal) is suitable for use in Western Blot and ELISA research applications.
Applications	WB, ELISA
Host/Source	Rabbit
Reactivity	Human, Mouse

PRODUCT PROPERTIES

Clonality	Polyclonal
Clone ID	
Concentration	1 mg/mL
Conjugation	Unconjugated
Purification	The antibody was affinity-purified from rabbit anti-serum by affinity-chromatography.
Dilution	WB 1:500-1:2000
Range	ELISA 1:40000
Formulation	PBS, 50% Glycerol, 0.5% BSA and 0.02% Sodium Azide.
Isotype	IgG
Storage	Store at -20°C for up to 1 year from the date of receipt, and avoid repeat freeze-thaw cycles.
Instruction	

TARGET INFORMATION

Gene ID	3268
Gene Symbol	AGFG2
Uniprot ID	AGFG2_HUMAN
Immunogen	The antiserum was produced against synthesized peptide derived from human AGFG2 at amino acid range 91-140
Immunogen Region	60-140 Internal
Specificity	AGFG2 polyclonal antibody (Arf-Gap Domain And Fg Repeat-Containing Protein 2) binds to endogenous Arf-Gap Domain And Fg Repeat-Containing Protein 2 at the amino acid region 60-140 Internal.
Immunogen Sequence	



Western blot analysis of lysates from MCF-7 cells, using AGFG2 Antibody. The lane on the right is blocked with the synthesized peptide.