

## Anti-RABEP2 antibody (330-410 Internal) (STJ95313)

STJ95313

### GENERAL INFORMATION

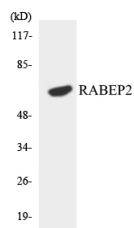
<b>Product Type</b>	Primary antibodies
<b>Short Description</b>	Rabbit polyclonal antibody anti-Rab Gtpase-Binding Effector Protein 2 (330-410 Internal) is suitable for use in Western Blot, Immunohistochemistry, Immunofluorescence and ELISA research applications.
<b>Applications</b>	WB, IHC-P, IF-P, ELISA
<b>Host/Source</b>	Rabbit
<b>Reactivity</b>	Human, Mouse, Rat

### PRODUCT PROPERTIES

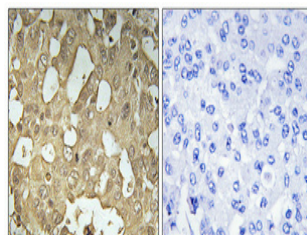
<b>Clonality</b>	Polyclonal
<b>Clone ID</b>	
<b>Concentration</b>	1 mg/mL
<b>Conjugation</b>	Unconjugated
<b>Purification</b>	The antibody was affinity-purified from rabbit anti-serum by affinity-chromatography.
<b>Dilution Range</b>	WB 1:500-1:2000 IHC 1:100-1:300 ELISA 1:10000
<b>Formulation</b>	PBS, 50% Glycerol, 0.5% BSA and 0.02% Sodium Azide.
<b>Isotype</b>	IgG
<b>Storage Instruction</b>	Store at -20°C for up to 1 year from the date of receipt, and avoid repeat freeze-thaw cycles.

### TARGET INFORMATION

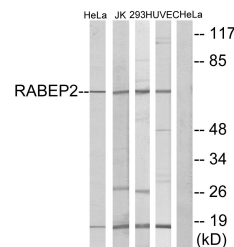
<b>Gene ID</b>	79874
<b>Gene Symbol</b>	RABEP2
<b>Uniprot ID</b>	RABE2_HUMAN
<b>Immunogen</b>	The antiserum was produced against synthesized peptide derived from human RABEP2 at amino acid range 353-402
<b>Immunogen Region</b>	330-410 Internal
<b>Specificity</b>	RABEP2 polyclonal antibody (Rab Gtpase-Binding Effector Protein 2) binds to endogenous Rab Gtpase-Binding Effector Protein 2 at the amino acid region 330-410 Internal.
<b>Immunogen Sequence</b>	



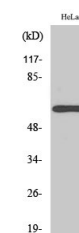
Western blot analysis of the lysates from HeLa cells using RABEP2 antibody.



Immunohistochemical analysis of paraffin-embedded Human breast cancer. Antibody was diluted at 1:100 (4°C overnight). High-pressure and temperature Tris-EDTA, pH8.0 was used for antigen retrieval. Negative control (right) obtained from antibody was pre-absorbed by immunogen peptide.



Western blot analysis of lysates from HeLa, Jurkat, 293, and HUVEC cells, using RABEP2 Antibody. The lane on the right is blocked with the synthesized peptide.



Western blot analysis of various cells using Rabaptin-5 Beta Polyclonal Antibody

This product is suitable for in-vitro studies under the RESEARCH USE ONLY [RUO] licence. This product must not be used as for diagnostic or other medical purposes.  
St John's Laboratory Ltd, Knowledge Dock Business Centre, University Way, London, E16 2RD | Tel: 0208 223 3081