

Anti-RABEP1 antibody (520-600 Internal) (STJ95312)

STJ95312

GENERAL INFORMATION

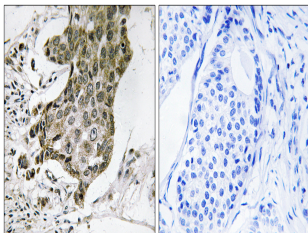
Product Type	Primary antibodies
Short Description	Rabbit polyclonal antibody anti-Rab Gtpase-Binding Effector Protein 1 (520-600 Internal) is suitable for use in Immunohistochemistry, Immunofluorescence and ELISA research applications.
Applications	IHC-P, IF-P, ELISA
Host/Source	Rabbit
Reactivity	Human, Mouse, Rat

PRODUCT PROPERTIES

Clonality	Polyclonal
Clone ID	
Concentration	1 mg/mL
Conjugation	Unconjugated
Purification	The antibody was affinity-purified from rabbit anti-serum by affinity-chromatography.
Dilution Range	IHC 1:100-1:300 ELISA 1:40000
Formulation	PBS, 50% Glycerol, 0.5% BSA and 0.02% Sodium Azide.
Isotype	IgG
Storage Instruction	Store at -20°C for up to 1 year from the date of receipt, and avoid repeat freeze-thaw cycles.

TARGET INFORMATION

Gene ID	9135
Gene Symbol	RABEP1
Uniprot ID	RABE1_HUMAN
Immunogen	The antiserum was produced against synthesized peptide derived from human RABEP1 at amino acid range 549-598
Immunogen Region	520-600 Internal
Specificity	RABEP1 polyclonal antibody (Rab Gtpase-Binding Effector Protein 1) binds to endogenous Rab Gtpase-Binding Effector Protein 1 at the amino acid region 520-600 Internal.
Immunogen Sequence	



Immunohistochemistry analysis of paraffin-embedded human breast carcinoma tissue, using RABEP1 Antibody. The picture on the right is blocked with the synthesized peptide.