

Anti-RAB3IP antibody (230-310 Internal) (STJ95311)

STJ95311

GENERAL INFORMATION

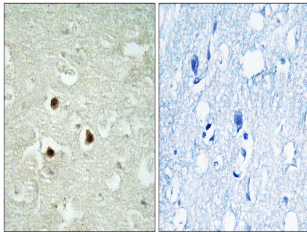
Product Type	Primary antibodies
Short Description	Rabbit polyclonal antibody anti-Rab-3a-Interacting Protein (230-310 Internal) is suitable for use in Western Blot, Immunohistochemistry, Immunofluorescence and ELISA research applications.
Applications	WB, IHC-P, IF-P, ELISA
Host/Source	Rabbit
Reactivity	Human, Mouse, Rat

PRODUCT PROPERTIES

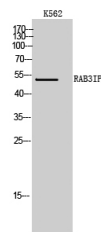
Clonality	Polyclonal
Clone ID	
Concentration	1 mg/mL
Conjugation	Unconjugated
Purification	The antibody was affinity-purified from rabbit anti-serum by affinity-chromatography.
Dilution Range	WB 1:500-1:2000 IHC 1:100-1:300 ELISA 1:40000
Formulation	PBS, 50% Glycerol, 0.5% BSA and 0.02% Sodium Azide.
Isotype	IgG
Storage Instruction	Store at -20°C for up to 1 year from the date of receipt, and avoid repeat freeze-thaw cycles.

TARGET INFORMATION

Gene ID	117177
Gene Symbol	RAB3IP
Uniprot ID	RAB3I_HUMAN
Immunogen	The antiserum was produced against synthesized peptide derived from human RAB3IP at amino acid range 257-306
Immunogen Region	230-310 Internal
Specificity	RAB3IP polyclonal antibody (Rab-3a-Interacting Protein) binds to endogenous Rab-3a-Interacting Protein at the amino acid region 230-310 Internal.
Immunogen Sequence	



Immunohistochemistry analysis of paraffin-embedded human brain tissue, using RAB3IP Antibody. The picture on the right is blocked with the synthesized peptide.



Western blot analysis of K562 cells using RAB3IP Polyclonal Antibody