

Anti-RAB11FIP3 antibody (540-620 C-Term) (STJ95309)

STJ95309

GENERAL INFORMATION

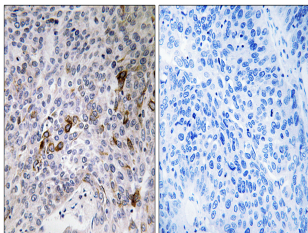
Product Type	Primary antibodies
Short Description	Rabbit polyclonal antibody anti-Rab11 Family-Interacting Protein 3 (540-620 C-Term) is suitable for use in Immunohistochemistry, Immunofluorescence and ELISA research applications.
Applications	IHC-P, IF-P, ELISA
Host/Source	Rabbit
Reactivity	Human, Mouse, Rat

PRODUCT PROPERTIES

Clonality	Polyclonal
Clone ID	
Concentration	1 mg/mL
Conjugation	Unconjugated
Purification	The antibody was affinity-purified from rabbit anti-serum by affinity-chromatography.
Dilution Range	IHC 1:100-1:300 ELISA 1:10000
Formulation	PBS, 50% Glycerol, 0.5% BSA and 0.02% Sodium Azide.
Isotype	IgG
Storage	Store at -20°C for up to 1 year from the date of receipt, and avoid repeat freeze-thaw cycles.
Instruction	

TARGET INFORMATION

Gene ID	9727
Gene Symbol	RAB11FIP3
Uniprot ID	RFIP3_HUMAN
Immunogen	The antiserum was produced against synthesized peptide derived from human RAB11FIP3 at amino acid range 569-618
Immunogen Region	540-620 C-Term
Specificity	RAB11FIP3 polyclonal antibody (Rab11 Family-Interacting Protein 3) binds to endogenous Rab11 Family-Interacting Protein 3 at the amino acid region 540-620 C-Term.
Immunogen Sequence	



Immunohistochemistry analysis of paraffin-embedded human lung carcinoma tissue, using RAB11FIP3 Antibody. The picture on the right is blocked with the synthesized peptide.