

Anti-RAB11FIP2 antibody (310-390 Internal) (STJ95308)

STJ95308

GENERAL INFORMATION

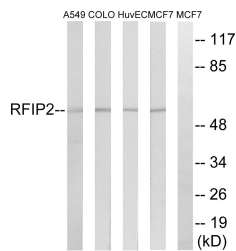
Product Type	Primary antibodies
Short Description	Rabbit polyclonal antibody anti-Rab11 Family-Interacting Protein 2 (310-390 Internal) is suitable for use in Western Blot and ELISA research applications.
Applications	WB, ELISA
Host/Source	Rabbit
Reactivity	Human, Mouse

PRODUCT PROPERTIES

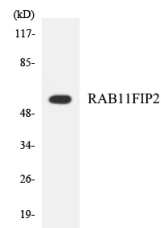
Clonality	Polyclonal
Clone ID	
Concentration	1 mg/mL
Conjugation	Unconjugated
Purification	The antibody was affinity-purified from rabbit anti-serum by affinity-chromatography.
Dilution Range	WB 1:500-1:2000 ELISA 1:10000
Formulation	PBS, 50% Glycerol, 0.5% BSA and 0.02% Sodium Azide.
Isotype	IgG
Storage Instruction	Store at -20°C for up to 1 year from the date of receipt, and avoid repeat freeze-thaw cycles.

TARGET INFORMATION

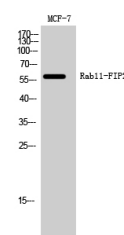
Gene ID	22841
Gene Symbol	RAB11FIP2
Uniprot ID	RFIP2_HUMAN
Immunogen	The antiserum was produced against synthesized peptide derived from human RAB11FIP2 at amino acid range 340-389
Immunogen Region	310-390 Internal
Specificity	RAB11FIP2 polyclonal antibody (Rab11 Family-Interacting Protein 2) binds to endogenous Rab11 Family-Interacting Protein 2 at the amino acid region 310-390 Internal.
Immunogen Sequence	



Western blot analysis of lysates from MCF-7, HUVEC, A549, and COLO cells, using RAB11FIP2 Antibody. The lane on the right is blocked with the synthesized peptide.



Western blot analysis of the lysates from HepG2 cells using RAB11FIP2 antibody.



Western blot analysis of MCF-7 cells using Rab11-FIP2 Polyclonal Antibody

This product is suitable for in-vitro studies under the RESEARCH USE ONLY [RUO] licence. This product must not be used as for diagnostic or other medical purposes.
St John's Laboratory Ltd, Knowledge Dock Business Centre, University Way, London, E16 2RD | Tel: 0208 223 3081