

Anti-RABL2A antibody (170-250 C-Term) (STJ95305)

STJ95305

GENERAL INFORMATION

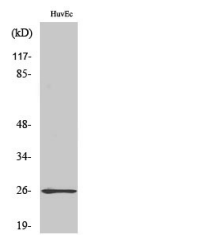
Product Type	Primary antibodies
Short Description	Rabbit polyclonal antibody anti-Rab-Like Protein 2a (170-250 C-Term) is suitable for use in Western Blot, Immunohistochemistry, Immunofluorescence and ELISA research applications.
Applications	WB, IHC-P, IF-P, ELISA
Host/Source	Rabbit
Reactivity	Human, Rat, Mouse

PRODUCT PROPERTIES

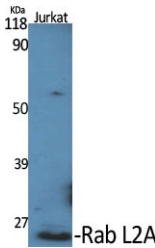
Clonality	Polyclonal
Clone ID	
Concentration	1 mg/mL
Conjugation	Unconjugated
Purification	The antibody was affinity-purified from rabbit anti-serum by affinity-chromatography.
Dilution Range	WB 1:500-1:2000 IHC 1:100-1:300 ELISA 1:20000
Formulation	PBS, 50% Glycerol, 0.5% BSA and 0.02% Sodium Azide.
Isotype	IgG
Storage Instruction	Store at -20°C for up to 1 year from the date of receipt, and avoid repeat freeze-thaw cycles.

TARGET INFORMATION

Gene ID	11159
Gene Symbol	RABL2A
Uniprot ID	RBL2A_HUMAN
Immunogen	The antiserum was produced against synthesized peptide derived from human RABL2A at amino acid range 179-228
Immunogen Region	170-250 C-Term
Specificity	RABL2A polyclonal antibody (Rab-Like Protein 2a) binds to endogenous Rab-Like Protein 2a at the amino acid region 170-250 C-Term.
Immunogen Sequence	



Western blot analysis of COLO205 cells using Rab L2A Polyclonal Antibody diluted at 1: 500



Western blot analysis of various cells using Rab L2A Polyclonal Antibody diluted at 1: 500

This product is suitable for in-vitro studies under the RESEARCH USE ONLY [RUO] licence. This product must not be used as for diagnostic or other medical purposes.
St John's Laboratory Ltd, Knowledge Dock Business Centre, University Way, London, E16 2RD | Tel: 0208 223 3081