

Anti-RAB29 antibody (90-170 Internal) (STJ95304)

STJ95304

GENERAL INFORMATION

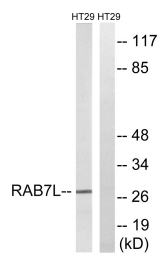
Product Type	Primary antibodies
Short Description	Rabbit polyclonal antibody anti-Ras-Related Protein Rab-711 (90-170 Internal) is suitable for use in Western Blot and ELISA research applications.
Applications	WB, ELISA
Host/Source	Rabbit
Reactivity	Human, Mouse, Rat

PRODUCT PROPERTIES

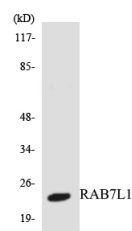
Clonality	Polyclonal
Clone ID	
Concentration	1 mg/mL
Conjugation	Unconjugated
Purification	The antibody was affinity-purified from rabbit anti-serum by affinity-chromatography.
Dilution Range	WB 1:500-1:2000 ELISA 1:20000
Formulation	PBS, 50% Glycerol, 0.5% BSA and 0.02% Sodium Azide.
Isotype	IgG
Storage	Store at -20°C for up to 1 year from the date of receipt, and avoid repeat freeze-thaw cycles.
Instruction	

TARGET INFORMATION

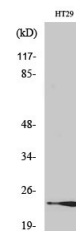
Gene ID	8934
Gene Symbol	RAB29
Uniprot ID	RAB7L_HUMAN
Immunogen	The antiserum was produced against synthesized peptide derived from human RAB7L1 at amino acid range 115-164
Immunogen Region	90-170 Internal
Specificity	RAB29 polyclonal antibody (Ras-Related Protein Rab-711) binds to endogenous Ras-Related Protein Rab-711 at the amino acid region 90-170 Internal.
Immunogen Sequence	



Western blot analysis of lysates from HT-29 cells, using RAB7L1 Antibody. The lane on the right is blocked with the synthesized peptide.



Western blot analysis of the lysates from HepG2 cells using RAB7L1 antibody.



Western blot analysis of various cells using Rab 7L1 Polyclonal Antibody