

Anti-RAB6C antibody (140-220 Internal) (STJ95303)

STJ95303

GENERAL INFORMATION

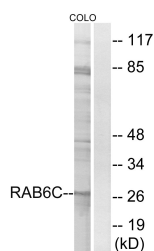
| | |
|--------------------------|--|
| Product Type | Primary antibodies |
| Short Description | Rabbit polyclonal antibody anti-Ras-Related Protein Rab-6c (140-220 Internal) is suitable for use in Western Blot and ELISA research applications. |
| Applications | WB, ELISA |
| Host/Source | Rabbit |
| Reactivity | Human, Mouse, Rat |

PRODUCT PROPERTIES

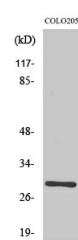
| | |
|-----------------------|--|
| Clonality | Polyclonal |
| Clone ID | |
| Concentration | 1 mg/mL |
| Conjugation | Unconjugated |
| Purification | The antibody was affinity-purified from rabbit anti-serum by affinity-chromatography. |
| Dilution Range | WB 1:500-1:2000 ELISA 1:40000 |
| Formulation | PBS, 50% Glycerol, 0.5% BSA and 0.02% Sodium Azide. |
| Isotype | IgG |
| Storage | Store at -20°C for up to 1 year from the date of receipt, and avoid repeat freeze-thaw cycles. |
| Instruction | |

TARGET INFORMATION

| | |
|---------------------------|--|
| Gene ID | 84084 |
| Gene Symbol | RAB6C |
| Uniprot ID | RAB6C_HUMAN |
| Immunogen | The antiserum was produced against synthesized peptide derived from human RAB6C at amino acid range 165-214 |
| Immunogen Region | 140-220 Internal |
| Specificity | RAB6C polyclonal antibody (Ras-Related Protein Rab-6c) binds to endogenous Ras-Related Protein Rab-6c at the amino acid region 140-220 Internal. |
| Immunogen Sequence | |



Western blot analysis of lysates from COLO cells, using RAB6C Antibody. The lane on the right is blocked with the synthesized peptide.



Western blot analysis of various cells using Rab 6C Polyclonal Antibody