

Anti-RAB6A antibody (90-170 Internal) (STJ95302)

STJ95302

GENERAL INFORMATION

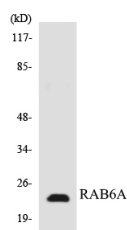
Product Type	Primary antibodies
Short Description	Rabbit polyclonal antibody anti-Ras-Related Protein Rab-6a (90-170 Internal) is suitable for use in Western Blot, Immunohistochemistry, Immunofluorescence and ELISA research applications.
Applications	WB, IHC-P, IF-P, ELISA
Host/Source	Rabbit
Reactivity	Human, Mouse, Rat

PRODUCT PROPERTIES

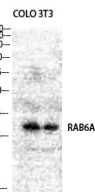
Clonality	Polyclonal
Clone ID	
Concentration	1 mg/mL
Conjugation	Unconjugated
Purification	The antibody was affinity-purified from rabbit anti-serum by affinity-chromatography.
Dilution Range	WB 1:500-1:2000 IHC 1:100-1:300 ELISA 1:20000
Formulation	PBS, 50% Glycerol, 0.5% BSA and 0.02% Sodium Azide.
Isotype	IgG
Storage Instruction	Store at -20°C for up to 1 year from the date of receipt, and avoid repeat freeze-thaw cycles.

TARGET INFORMATION

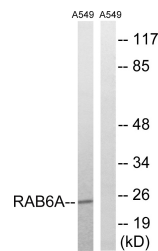
Gene ID	5870
Gene Symbol	RAB6A
Uniprot ID	RAB6A_HUMAN
Immunogen	The antiserum was produced against synthesized peptide derived from human RAB6A at amino acid range 113-162
Immunogen Region	90-170 Internal
Specificity	RAB6A polyclonal antibody (Ras-Related Protein Rab-6a) binds to endogenous Ras-Related Protein Rab-6a at the amino acid region 90-170 Internal.
Immunogen Sequence	



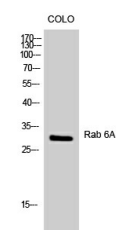
Western blot analysis of the lysates from HT-29 cells using RAB6A antibody.



Western blot analysis of COLO NIH-3T3 cells using Rab 6A Polyclonal Antibody diluted at 1: 1000



Western blot analysis of lysates from A549 cells, using RAB6A Antibody. The lane on the right is blocked with the synthesized peptide.



Western blot analysis of COLO cells using Rab 6A Polyclonal Antibody diluted at 1: 1000

This product is suitable for in-vitro studies under the RESEARCH USE ONLY [RUO] licence. This product must not be used as for diagnostic or other medical purposes.
St John's Laboratory Ltd, Knowledge Dock Business Centre, University Way, London, E16 2RD | Tel: 0208 223 3081