

Anti-RAB40B antibody (210-290 C-Term) (STJ95299)

STJ95299

GENERAL INFORMATION

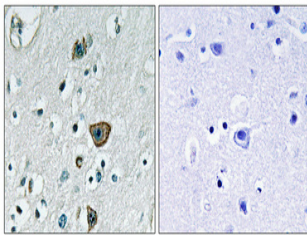
Product Type	Primary antibodies
Short Description	Rabbit polyclonal antibody anti-Ras-Related Protein Rab-40b (210-290 C-Term) is suitable for use in Western Blot, Immunohistochemistry, Immunofluorescence and ELISA research applications.
Applications	WB, IHC-P, IF-P, ELISA
Host/Source	Rabbit
Reactivity	Human, Rat, Mouse

PRODUCT PROPERTIES

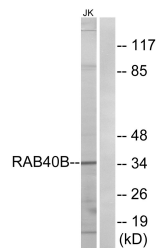
Clonality	Polyclonal
Clone ID	
Concentration	1 mg/mL
Conjugation	Unconjugated
Purification	The antibody was affinity-purified from rabbit anti-serum by affinity-chromatography.
Dilution Range	WB 1:500-1:2000 ELISA 1:40000
Formulation	PBS, 50% Glycerol, 0.5% BSA and 0.02% Sodium Azide.
Isotype	IgG
Storage	Store at -20°C for up to 1 year from the date of receipt, and avoid repeat freeze-thaw cycles.
Instruction	

TARGET INFORMATION

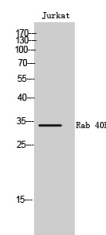
Gene ID	10966
Gene Symbol	RAB40B
Uniprot ID	RB40B_HUMAN
Immunogen	The antiserum was produced against synthesized peptide derived from human RAB40B at amino acid range 229-278
Immunogen Region	210-290 C-Term
Specificity	RAB40B polyclonal antibody (Ras-Related Protein Rab-40b) binds to endogenous Ras-Related Protein Rab-40b at the amino acid region 210-290 C-Term.
Immunogen Sequence	



Immunohistochemical analysis of paraffin-embedded Human brain. Antibody was diluted at 1:100 (4°C overnight). High-pressure and temperature Tris-EDTA, pH8.0 was used for antigen retrieval. Negative control (right) obtained from antibody was pre-absorbed by immunogen peptide.



Western blot analysis of lysates from Jurkat cells, using RAB40B Antibody. The lane on the right is blocked with the synthesized peptide.



Western blot analysis of Jurkat cells using Rab 40B Polyclonal Antibody