

Anti-RAB35 antibody (70-150 Internal) (STJ95296)

STJ95296

GENERAL INFORMATION

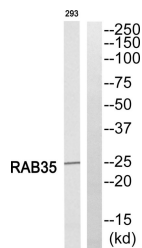
Product Type	Primary antibodies
Short Description	Rabbit polyclonal antibody anti-Ras-Related Protein Rab-35 (70-150 Internal) is suitable for use in Western Blot and ELISA research applications.
Applications	WB, ELISA
Host/Source	Rabbit
Reactivity	Human, Mouse, Rat

PRODUCT PROPERTIES

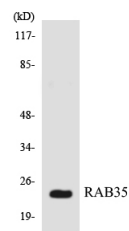
Clonality	Polyclonal
Clone ID	
Concentration	1 mg/mL
Conjugation	Unconjugated
Purification	The antibody was affinity-purified from rabbit anti-serum by affinity-chromatography.
Dilution Range	WB 1:500-1:2000 ELISA 1:10000
Formulation	PBS, 50% Glycerol, 0.5% BSA and 0.02% Sodium Azide.
Isotype	IgG
Storage	Store at -20°C for up to 1 year from the date of receipt, and avoid repeat freeze-thaw cycles.
Instruction	

TARGET INFORMATION

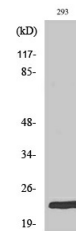
Gene ID	11021
Gene Symbol	RAB35
Uniprot ID	RAB35_HUMAN
Immunogen	The antiserum was produced against synthesized peptide derived from human RAB35 at amino acid range 99-148
Immunogen Region	70-150 Internal
Specificity	RAB35 polyclonal antibody (Ras-Related Protein Rab-35) binds to endogenous Ras-Related Protein Rab-35 at the amino acid region 70-150 Internal.
Immunogen Sequence	



Western blot analysis of RAB35 Antibody. The lane on the right is blocked with the RAB35 peptide.



Western blot analysis of the lysates from HT-29 cells using RAB35 antibody.



Western blot analysis of various cells using Rab 35 Polyclonal Antibody

This product is suitable for in-vitro studies under the RESEARCH USE ONLY [RUO] licence. This product must not be used as for diagnostic or other medical purposes.
St John's Laboratory Ltd, Knowledge Dock Business Centre, University Way, London, E16 2RD | Tel: 0208 223 3081