

## Anti-RAB34 antibody (180-260 C-Term) (STJ95295)

STJ95295

### GENERAL INFORMATION

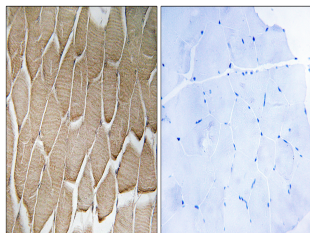
<b>Product Type</b>	Primary antibodies
<b>Short Description</b>	Rabbit polyclonal antibody anti-Ras-Related Protein Rab-34 (180-260 C-Term) is suitable for use in Western Blot, Immunohistochemistry, Immunofluorescence and ELISA research applications.
<b>Applications</b>	WB, IHC-P, IF-P, ELISA
<b>Host/Source</b>	Rabbit
<b>Reactivity</b>	Human, Rat, Mouse

### PRODUCT PROPERTIES

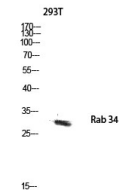
<b>Clonality</b>	Polyclonal
<b>Clone ID</b>	
<b>Concentration</b>	1 mg/mL
<b>Conjugation</b>	Unconjugated
<b>Purification</b>	The antibody was affinity-purified from rabbit anti-serum by affinity-chromatography.
<b>Dilution Range</b>	WB 1:500-1:2000 IHC-P 1:50-200 ELISA 1:5000
<b>Formulation</b>	PBS, 50% Glycerol, 0.5% BSA and 0.02% Sodium Azide.
<b>Isotype</b>	IgG
<b>Storage Instruction</b>	Store at -20°C for up to 1 year from the date of receipt, and avoid repeat freeze-thaw cycles.

### TARGET INFORMATION

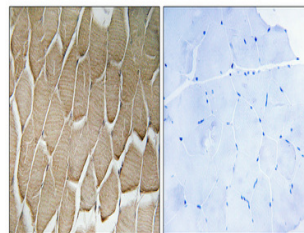
<b>Gene ID</b>	83871
<b>Gene Symbol</b>	RAB34
<b>Uniprot ID</b>	RAB34_HUMAN
<b>Immunogen</b>	The antiserum was produced against synthesized peptide derived from human RAB34 at amino acid range 206-255
<b>Immunogen Region</b>	180-260 C-Term
<b>Specificity</b>	RAB34 polyclonal antibody (Ras-Related Protein Rab-34) binds to endogenous Ras-Related Protein Rab-34 at the amino acid region 180-260 C-Term.
<b>Immunogen Sequence</b>	



Immunohistochemistry analysis of paraffin-embedded human skeletal muscle, using RAB34 Antibody. The picture on the right is blocked with the synthesized peptide.



Western blot analysis of 293T lysis using Rab 34 antibody. Antibody was diluted at 1:500



Immunohistochemical analysis of paraffin-embedded Human skeletal muscle. Antibody was diluted at 1:100 (4°C overnight). High-pressure and temperature Tris-EDTA, pH8.0 was used for antigen retrieval. Negative control (right) obtained from antibody was pre-absorbed by immunogen peptide.



Western blot analysis of various cells using Rab 34 Polyclonal Antibody diluted at 1: 500

This product is suitable for in-vitro studies under the RESEARCH USE ONLY [RUO] licence. This product must not be used as for diagnostic or other medical purposes.  
St John's Laboratory Ltd, Knowledge Dock Business Centre, University Way, London, E16 2RD | Tel: 0208 223 3081