

Anti-RAB3GAP2 antibody (390-470 Internal) (STJ95292)

STJ95292

GENERAL INFORMATION

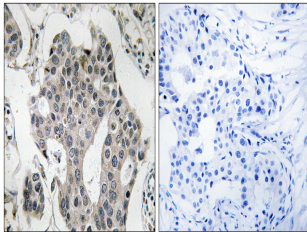
Product Type	Primary antibodies
Short Description	Rabbit polyclonal antibody anti-Rab3 Gtpase-Activating Protein Non-Catalytic Subunit (390-470 Internal) is suitable for use in Western Blot, Immunohistochemistry, Immunofluorescence and ELISA research applications.
Applications	WB, IHC-P, IF-P, ELISA
Host/Source	Rabbit
Reactivity	Human, Mouse, Rat, Monkey

PRODUCT PROPERTIES

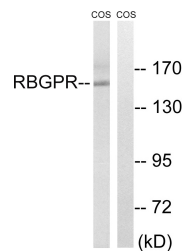
Clonality	Polyclonal
Clone ID	
Concentration	1 mg/mL
Conjugation	Unconjugated
Purification	The antibody was affinity-purified from rabbit anti-serum by affinity-chromatography.
Dilution Range	WB 1:500-1:2000 IHC 1:100-1:300 ELISA 1:40000
Formulation	PBS, 50% Glycerol, 0.5% BSA and 0.02% Sodium Azide.
Isotype	IgG
Storage Instruction	Store at -20°C for up to 1 year from the date of receipt, and avoid repeat freeze-thaw cycles.

TARGET INFORMATION

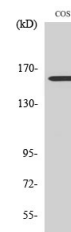
Gene ID	25782
Gene Symbol	RAB3GAP2
Uniprot ID	RBGPR_HUMAN
Immunogen	The antiserum was produced against synthesized peptide derived from human RAB3GAP2 at amino acid range 417-466
Immunogen Region	390-470 Internal
Specificity	RAB3GAP2 polyclonal antibody (Rab3 Gtpase-Activating Protein Non-Catalytic Subunit) binds to endogenous Rab3 Gtpase-Activating Protein Non-Catalytic Subunit at the amino acid region 390-470 Internal.
Immunogen Sequence	



Immunohistochemistry analysis of paraffin-embedded human breast carcinoma tissue, using RAB3GAP2 Antibody. The picture on the right is blocked with the synthesized peptide.



Western blot analysis of lysates from COS cells, using RAB3GAP2 Antibody. The lane on the right is blocked with the synthesized peptide.



Western blot analysis of various cells using Rab 3 GAP p150 Polyclonal Antibody