

Anti-RAB3GAP1 antibody (510-590 Internal) (STJ95291)

STJ95291

GENERAL INFORMATION

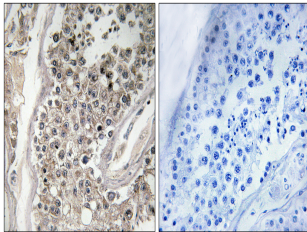
| | |
|--------------------------|--|
| Product Type | Primary antibodies |
| Short Description | Rabbit polyclonal antibody anti-Rab3 Gtpase-Activating Protein Catalytic Subunit (510-590 Internal) is suitable for use in Western Blot, Immunohistochemistry, Immunofluorescence and ELISA research applications. |
| Applications | WB, IHC-P, IF-P, ELISA |
| Host/Source | Rabbit |
| Reactivity | Human, Rat, Mouse |

PRODUCT PROPERTIES

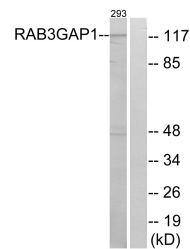
| | |
|----------------------------|--|
| Clonality | Polyclonal |
| Clone ID | |
| Concentration | 1 mg/mL |
| Conjugation | Unconjugated |
| Purification | The antibody was affinity-purified from rabbit anti-serum by affinity-chromatography. |
| Dilution Range | WB 1:500-1:2000 IHC 1:100-1:300 ELISA 1:40000 |
| Formulation | PBS, 50% Glycerol, 0.5% BSA and 0.02% Sodium Azide. |
| Isotype | IgG |
| Storage Instruction | Store at -20°C for up to 1 year from the date of receipt, and avoid repeat freeze-thaw cycles. |

TARGET INFORMATION

| | |
|---------------------------|---|
| Gene ID | 22930 |
| Gene Symbol | RAB3GAP1 |
| Uniprot ID | RB3GP_HUMAN |
| Immunogen | The antiserum was produced against synthesized peptide derived from human RAB3GAP1 at amino acid range 538-587 |
| Immunogen Region | 510-590 Internal |
| Specificity | RAB3GAP1 polyclonal antibody (Rab3 Gtpase-Activating Protein Catalytic Subunit) binds to endogenous Rab3 Gtpase-Activating Protein Catalytic Subunit at the amino acid region 510-590 Internal. |
| Immunogen Sequence | |



Immunohistochemistry analysis of paraffin-embedded human testis tissue, using RAB3GAP1 Antibody. The picture on the right is blocked with the synthesized peptide.



Western blot analysis of lysates from 293 cells, using RAB3GAP1 Antibody. The lane on the right is blocked with the synthesized peptide.



Western blot analysis of various cells using Rab 3 GAP p130 Polyclonal Antibody diluted at 1: 2000