

Anti-RAB2B antibody (80-160 Internal) (STJ95290)

STJ95290

GENERAL INFORMATION

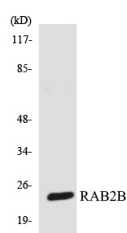
Product Type	Primary antibodies
Short Description	Rabbit polyclonal antibody anti-Ras-Related Protein Rab-2b (80-160 Internal) is suitable for use in Western Blot and ELISA research applications.
Applications	WB, ELISA
Host/Source	Rabbit
Reactivity	Human, Mouse, Rat

PRODUCT PROPERTIES

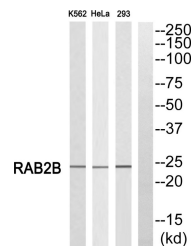
Clonality	Polyclonal
Clone ID	
Concentration	1 mg/mL
Conjugation	Unconjugated
Purification	The antibody was affinity-purified from rabbit anti-serum by affinity-chromatography.
Dilution Range	WB 1:500-1:2000 ELISA 1:10000
Formulation	PBS, 50% Glycerol, 0.5% BSA and 0.02% Sodium Azide.
Isotype	IgG
Storage	Store at -20°C for up to 1 year from the date of receipt, and avoid repeat freeze-thaw cycles.
Instruction	

TARGET INFORMATION

Gene ID	84932
Gene Symbol	RAB2B
Uniprot ID	RAB2B_HUMAN
Immunogen	The antiserum was produced against synthesized peptide derived from human RAB2B at amino acid range 103-152
Immunogen Region	80-160 Internal
Specificity	RAB2B polyclonal antibody (Ras-Related Protein Rab-2b) binds to endogenous Ras-Related Protein Rab-2b at the amino acid region 80-160 Internal.
Immunogen Sequence	



Western blot analysis of the lysates from 293 cells using RAB2B antibody.



Western blot analysis of RAB2B Antibody. The lane on the right is blocked with the RAB2B peptide.

This product is suitable for in-vitro studies under the RESEARCH USE ONLY [RUO] licence. This product must not be used as for diagnostic or other medical purposes.
St John's Laboratory Ltd, Knowledge Dock Business Centre, University Way, London, E16 2RD | Tel: 0208 223 3081