

Anti-RAB18 antibody (80-160 Internal) (STJ95285)

STJ95285

GENERAL INFORMATION

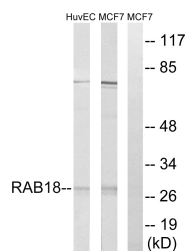
| | |
|--------------------------|---|
| Product Type | Primary antibodies |
| Short Description | Rabbit polyclonal antibody anti-Ras-Related Protein Rab-18 (80-160 Internal) is suitable for use in Western Blot and ELISA research applications. |
| Applications | WB, ELISA |
| Host/Source | Rabbit |
| Reactivity | Human, Mouse, Rat |

PRODUCT PROPERTIES

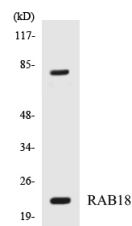
| | |
|----------------------------|--|
| Clonality | Polyclonal |
| Clone ID | |
| Concentration | 1 mg/mL |
| Conjugation | Unconjugated |
| Purification | The antibody was affinity-purified from rabbit anti-serum by affinity-chromatography. |
| Dilution Range | WB 1:500-1:2000 ELISA 1:10000 |
| Formulation | PBS, 50% Glycerol, 0.5% BSA and 0.02% Sodium Azide. |
| Isotype | IgG |
| Storage Instruction | Store at -20°C for up to 1 year from the date of receipt, and avoid repeat freeze-thaw cycles. |

TARGET INFORMATION

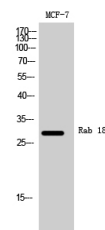
| | |
|---------------------------|---|
| Gene ID | 22931 |
| Gene Symbol | RAB18 |
| Uniprot ID | RAB18_HUMAN |
| Immunogen | The antiserum was produced against synthesized peptide derived from human RAB18 at amino acid range 103-152 |
| Immunogen Region | 80-160 Internal |
| Specificity | RAB18 polyclonal antibody (Ras-Related Protein Rab-18) binds to endogenous Ras-Related Protein Rab-18 at the amino acid region 80-160 Internal. |
| Immunogen Sequence | |



Western blot analysis of lysates from MCF-7 and HUVEC cells, using RAB18 Antibody. The lane on the right is blocked with the synthesized peptide.



Western blot analysis of the lysates from HepG2 cells using RAB18 antibody.



Western blot analysis of MCF-7 cells using Rab 18 Polyclonal Antibody.