

Anti-RAB11B antibody (140-220 C-Term) (STJ95284)

STJ95284

GENERAL INFORMATION

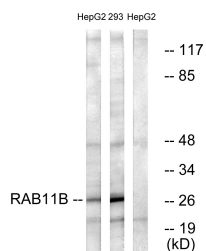
Product Type	Primary antibodies
Short Description	Rabbit polyclonal antibody anti-Ras-Related Protein Rab-11b (140-220 C-Term) is suitable for use in Western Blot and ELISA research applications.
Applications	WB, ELISA
Host/Source	Rabbit
Reactivity	Human, Mouse, Rat

PRODUCT PROPERTIES

Clonality	Polyclonal
Clone ID	
Concentration	1 mg/mL
Conjugation	Unconjugated
Purification	The antibody was affinity-purified from rabbit anti-serum by affinity-chromatography.
Dilution Range	WB 1:500-1:2000 ELISA 1:10000
Formulation	PBS, 50% Glycerol, 0.5% BSA and 0.02% Sodium Azide.
Isotype	IgG
Storage	Store at -20°C for up to 1 year from the date of receipt, and avoid repeat freeze-thaw cycles.
Instruction	

TARGET INFORMATION

Gene ID	9230
Gene Symbol	RAB11B
Uniprot ID	RB11B_HUMAN
Immunogen	The antiserum was produced against synthesized peptide derived from human RAB11B at amino acid range 164-213
Immunogen Region	140-220 C-Term
Specificity	RAB11B polyclonal antibody (Ras-Related Protein Rab-11b) binds to endogenous Ras-Related Protein Rab-11b at the amino acid region 140-220 C-Term.
Immunogen Sequence	



Western blot analysis of lysates from HepG2 and 293 cells, using RAB11B Antibody. The lane on the right is blocked with the synthesized peptide.