

Anti-PWWP2B antibody (240-320 Internal) (STJ95274)

STJ95274

GENERAL INFORMATION

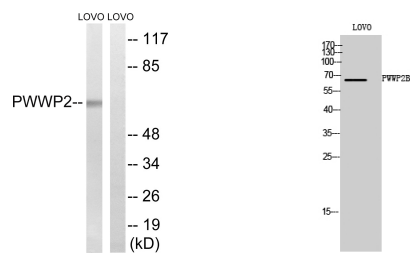
Product Type	Primary antibodies
Short Description	Rabbit polyclonal antibody anti-Pwwp Domain-Containing Protein 2b (240-320 Internal) is suitable for use in Western Blot, Immunohistochemistry, Immunofluorescence and ELISA research applications.
Applications	WB, IHC-P, IF-P, ELISA
Host/Source	Rabbit
Reactivity	Human, Rat, Mouse

PRODUCT PROPERTIES

Clonality	Polyclonal
Clone ID	
Concentration	1 mg/mL
Conjugation	Unconjugated
Purification	The antibody was affinity-purified from rabbit anti-serum by affinity-chromatography.
Dilution Range	WB 1:500-1:2000 IHC 1:100-1:300 ELISA 1:20000
Formulation	PBS, 50% Glycerol, 0.5% BSA and 0.02% Sodium Azide.
Isotype	IgG
Storage Instruction	Store at 20°C for up to 1 year from the date of receipt, and avoid repeat freeze-thaw cycles.

TARGET INFORMATION

Gene ID	170394
Gene Symbol	PWWP2B
Uniprot ID	PWWP2B_HUMAN
Immunogen Region	The antiserum was produced against synthesized peptide derived from human PWWP2B at amino acid range 268-317
Immunogen Region	240-320 Internal
Specificity	PWWP2B polyclonal antibody (Pwwp Domain-Containing Protein 2b) binds to endogenous Pwwp Domain-Containing Protein 2b at the amino acid region 240-320 Internal.
Immunogen Sequence	



Western blot analysis of lysates from LOVO cells, using PWWP2B Antibody. The lane on the right is blocked with the synthesized peptide.

Western blot analysis of LOVO cells using PWWP2B Polyclonal Antibody

This product is suitable for in-vitro studies under the RESEARCH USE ONLY [RUO] licence. This product must not be used as for diagnostic or other medical purposes.
St John's Laboratory Ltd, Knowledge Dock Business Centre, University Way, London, E16 2RD | Tel: 0208 223 3081