

Anti-PLEKHG4 antibody (630-710 Internal) (STJ95273)

STJ95273

GENERAL INFORMATION

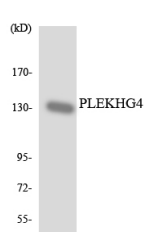
Product Type	Primary antibodies
Short Description	Rabbit polyclonal antibody anti-Puratrophin-1 (630-710 Internal) is suitable for use in Western Blot, Immunohistochemistry, Immunofluorescence and ELISA research applications.
Applications	WB, IHC-P, IF-P, ELISA
Host/Source	Rabbit
Reactivity	Human, Monkey

PRODUCT PROPERTIES

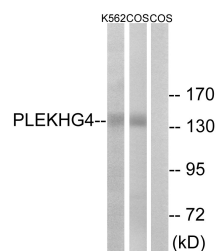
Clonality	Polyclonal
Clone ID	
Concentration	1 mg/mL
Conjugation	Unconjugated
Purification	The antibody was affinity-purified from rabbit anti-serum by affinity-chromatography.
Dilution Range	WB 1:500-1:2000 IHC 1:100-1:300 ELISA 1:20000
Formulation	PBS, 50% Glycerol, 0.5% BSA and 0.02% Sodium Azide.
Isotype	IgG
Storage Instruction	Store at -20°C for up to 1 year from the date of receipt, and avoid repeat freeze-thaw cycles.

TARGET INFORMATION

Gene ID	25894
Gene Symbol	PLEKHG4
Uniprot ID	PKHG4_HUMAN
Immunogen Region	The antiserum was produced against synthesized peptide derived from human PLEKHG4 at amino acid range 654-703
Immunogen Region	630-710 Internal
Specificity	PLEKHG4 polyclonal antibody (Puratrophin-1) binds to endogenous Puratrophin-1 at the amino acid region 630-710 Internal.
Immunogen Sequence	



Western blot analysis of the lysates from HUVEC cells using PLEKHG4 antibody.



Western blot analysis of lysates from COS7 and K562 cells, using PLEKHG4 Antibody. The lane on the right is blocked with the synthesized peptide.