

Anti-BBC3 antibody (C-Term) (STJ95272)

STJ95272

GENERAL INFORMATION

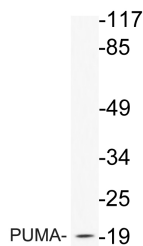
Product Type	Primary antibodies
Short Description	Rabbit polyclonal antibody anti-Bcl-2-Binding Component 3-Isoforms 1/2 (C-Term) is suitable for use in Western Blot and ELISA research applications.
Applications	WB, ELISA
Host/Source	Rabbit
Reactivity	Human, Mouse, Rat

PRODUCT PROPERTIES

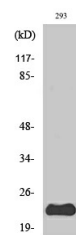
Clonality	Polyclonal
Clone ID	
Concentration	1 mg/mL
Conjugation	Unconjugated
Purification	The antibody was affinity-purified from rabbit anti-serum by affinity-chromatography.
Dilution Range	WB 1:500-1:2000 ELISA 1:10000
Formulation	PBS, 50% Glycerol, 0.5% BSA and 0.02% Sodium Azide.
Isotype	IgG
Storage Instruction	Store at -20°C for up to 1 year from the date of receipt, and avoid repeat freeze-thaw cycles.

TARGET INFORMATION

Gene ID	27113
Gene Symbol	BBC3
Uniprot ID	BBC3_HUMAN
Immunogen	The antiserum was produced against synthesized peptide derived from human PUMA at amino acid range 120-169
Immunogen Region	C-Term
Specificity	BBC3 polyclonal antibody (Bcl-2-Binding Component 3-Isoforms 1/2) binds to endogenous Bcl-2-Binding Component 3-Isoforms 1/2 at the amino acid region C-Term.
Immunogen Sequence	



Western blot analysis of lysate from 293 cells treated with EGF, using PUMA antibody.



Western blot analysis of various cells using PUMA Polyclonal Antibody

This product is suitable for in-vitro studies under the RESEARCH USE ONLY [RUO] licence. This product must not be used as for diagnostic or other medical purposes.
St John's Laboratory Ltd, Knowledge Dock Business Centre, University Way, London, E16 2RD | Tel: 0208 223 3081