

## Anti-SPI1 antibody (150-230 Internal) (STJ95271)

STJ95271

### GENERAL INFORMATION

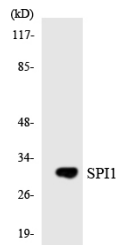
|                          |  |
|--------------------------|--|
| <b>Product Type</b>      | Primary antibodies   |
| <b>Short Description</b> | Rabbit polyclonal antibody anti-Transcription Factor Pu.1 (150-230 Internal) is suitable for use in Western Blot, Immunohistochemistry, Immunofluorescence, Immunocytochemistry and ELISA research applications. |
| <b>Applications</b>      | WB, IHC-P, IF, ICC, ELISA  |
| <b>Host/Source</b>       | Rabbit   |
| <b>Reactivity</b>        | Human, Mouse, Rat, Monkey  |

### PRODUCT PROPERTIES

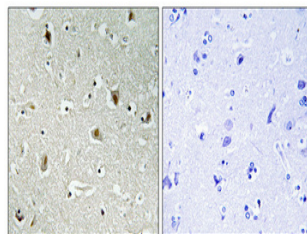
|                            |  |
|----------------------------|--|
| <b>Clonality</b>           | Polyclonal   |
| <b>Clone ID</b>            |  |
| <b>Concentration</b>       | 1 mg/mL  |
| <b>Conjugation</b>         | Unconjugated   |
| <b>Purification</b>        | The antibody was affinity-purified from rabbit anti-serum by affinity-chromatography.          |
| <b>Dilution Range</b>      | WB 1:500-1:2000<br>IHC 1:100-1:300<br>IF 1:200-1:1000<br>ELISA 1:40000                         |
| <b>Formulation</b>         | PBS, 50% Glycerol, 0.5% BSA and 0.02% Sodium Azide.  |
| <b>Isotype</b>             | IgG  |
| <b>Storage Instruction</b> | Store at -20°C for up to 1 year from the date of receipt, and avoid repeat freeze-thaw cycles. |

### TARGET INFORMATION

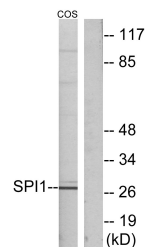
|                           |   |
|---------------------------|---|
| <b>Gene ID</b>            | 6688  |
| <b>Gene Symbol</b>        | SPI1  |
| <b>Uniprot ID</b>         | SPI1_HUMAN  |
| <b>Immunogen</b>          | The antiserum was produced against synthesized peptide derived from human SPI1 at amino acid range 181-230                                    |
| <b>Immunogen Region</b>   | 150-230 Internal  |
| <b>Specificity</b>        | SPI1 polyclonal antibody (Transcription Factor Pu.1) binds to endogenous Transcription Factor Pu.1 at the amino acid region 150-230 Internal. |
| <b>Immunogen Sequence</b> |   |



Western blot analysis of the lysates from HUVEC cells using SPI1 antibody.



Immunohistochemical analysis of paraffin-embedded Human brain. Antibody was diluted at 1:100 (4°C overnight). High-pressure and temperature Tris-EDTA, pH8.0 was used for antigen retrieval. Negative control (right) obtained from antibody was pre-absorbed by immunogen peptide.



Western blot analysis of lysates from COS7 cells, using SPI1 Antibody. The lane on the right is blocked with the synthesized peptide.



Western blot analysis of various cells using PU.1 Polyclonal Antibody cells nucleus extracted by Minute TM Cytoplasmic and Nuclear Fractionation kit (SC-003, Inventibiotec, MN, USA).

This product is suitable for in-vitro studies under the RESEARCH USE ONLY [RUO] licence. This product must not be used as for diagnostic or other medical purposes.  
St John's Laboratory Ltd, Knowledge Dock Business Centre, University Way, London, E16 2RD | Tel: 0208 223 3081