

Anti-PTTG1 antibody (80-160 Internal) (STJ95269)

STJ95269

GENERAL INFORMATION

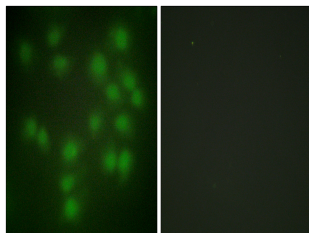
Product Type	Primary antibodies
Short Description	Rabbit polyclonal antibody anti-Securin (80-160 Internal) is suitable for use in Western Blot, Immunohistochemistry, Immunofluorescence, Immunocytochemistry and ELISA research applications.
Applications	WB, IHC-P, IF, ICC, ELISA
Host/Source	Rabbit
Reactivity	Human, Rat, Mouse

PRODUCT PROPERTIES

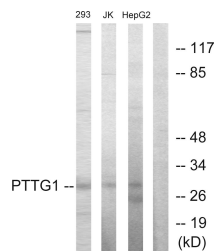
Clonality	Polyclonal
Clone ID	
Concentration	1 mg/mL
Conjugation	Unconjugated
Purification	The antibody was affinity-purified from rabbit anti-serum by affinity-chromatography.
Dilution Range	WB 1:500-1:2000 IHC 1:100-1:300 IF 1:200-1:1000 ELISA 1:20000
Formulation	PBS, 50% Glycerol, 0.5% BSA and 0.02% Sodium Azide.
Isotype	IgG
Storage Instruction	Store at -20°C for up to 1 year from the date of receipt, and avoid repeat freeze-thaw cycles.

TARGET INFORMATION

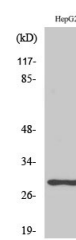
Gene ID	9232
Gene Symbol	PTTG1
Uniprot ID	PTTG1_HUMAN
Immunogen	The antiserum was produced against synthesized peptide derived from human PTTG1 at amino acid range 111-160
Immunogen Region	80-160 Internal
Specificity	PTTG1 polyclonal antibody (Securin) binds to endogenous Securin at the amino acid region 80-160 Internal.
Immunogen Sequence	



Immunofluorescence analysis of HUVEC cells, using PTTG1 Antibody. The picture on the right is blocked with the synthesized peptide.



Western blot analysis of lysates from HepG2, Jurkat, and 293 cells, using PTTG1 Antibody. The lane on the right is blocked with the synthesized peptide.



Western blot analysis of various cells using PTTG1/2/3 Polyclonal Antibody diluted at 1: 1000