

## Anti-PTPRZ1 antibody (100-180 N-Term) (STJ95268)

STJ95268

### GENERAL INFORMATION

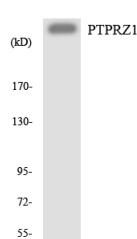
<b>Product Type</b>	Primary antibodies
<b>Short Description</b>	Rabbit polyclonal antibody anti-Receptor-Type Tyrosine-Protein Phosphatase Zeta (100-180 N-Term) is suitable for use in Western Blot and ELISA research applications.
<b>Applications</b>	WB, ELISA
<b>Host/Source</b>	Rabbit
<b>Reactivity</b>	Human, Mouse, Rat

### PRODUCT PROPERTIES

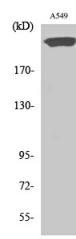
<b>Clonality</b>	Polyclonal
<b>Clone ID</b>	
<b>Concentration</b>	1 mg/mL
<b>Conjugation</b>	Unconjugated
<b>Purification</b>	The antibody was affinity-purified from rabbit anti-serum by affinity-chromatography.
<b>Dilution</b>	WB 1:500-1:2000
<b>Range</b>	ELISA 1:5000
<b>Formulation</b>	PBS, 50% Glycerol, 0.5% BSA and 0.02% Sodium Azide.
<b>Isotype</b>	IgG
<b>Storage</b>	Store at -20°C for up to 1 year from the date of receipt, and avoid repeat freeze-thaw cycles.
<b>Instruction</b>	

### TARGET INFORMATION

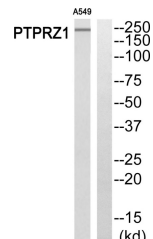
<b>Gene ID</b>	5803
<b>Gene Symbol</b>	PTPRZ1
<b>Uniprot ID</b>	PTPRZ_HUMAN
<b>Immunogen</b>	The antiserum was produced against synthesized peptide derived from human PTPRZ1 at amino acid range 122-171
<b>Immunogen Region</b>	100-180 N-Term
<b>Specificity</b>	PTPRZ1 polyclonal antibody (Receptor-Type Tyrosine-Protein Phosphatase Zeta) binds to endogenous Receptor-Type Tyrosine-Protein Phosphatase Zeta at the amino acid region 100-180 N-Term.
<b>Immunogen Sequence</b>	



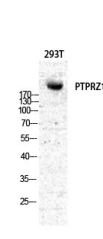
Western blot analysis of the lysates from HeLa cells using PTPRZ1 antibody.



Western blot analysis of A549 cells using PTP Zeta Polyclonal Antibody diluted at 1: 500



Western blot analysis of PTPRZ1 Antibody. The lane on the right is blocked with the PTPRZ1 peptide.



Western blot analysis of various cells using PTP Zeta Polyclonal Antibody diluted at 1: 500

This product is suitable for in-vitro studies under the RESEARCH USE ONLY [RUO] licence. This product must not be used as for diagnostic or other medical purposes.  
 St John's Laboratory Ltd, Knowledge Dock Business Centre, University Way, London, E16 2RD | Tel: 0208 223 3081