

Anti-PTPN1 antibody (30-110) (STJ95265)

STJ95265

GENERAL INFORMATION

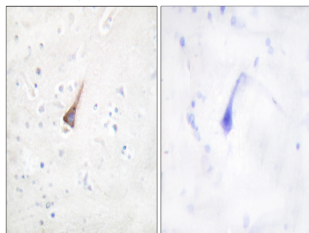
| | |
|--------------------------|--|
| Product Type | Primary antibodies |
| Short Description | Rabbit polyclonal antibody anti-Tyrosine-Protein Phosphatase Non-Receptor Type 1 (30-110) is suitable for use in Western Blot, Immunohistochemistry, Immunofluorescence and ELISA research applications. |
| Applications | WB, IHC-P, IF-P, ELISA |
| Host/Source | Rabbit |
| Reactivity | Human, Mouse, Rat, Monkey |

PRODUCT PROPERTIES

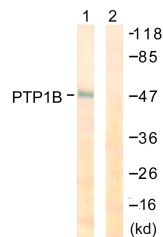
| | |
|----------------------------|--|
| Clonality | Polyclonal |
| Clone ID | |
| Concentration | 1 mg/mL |
| Conjugation | Unconjugated |
| Purification | The antibody was affinity-purified from rabbit anti-serum by affinity-chromatography. |
| Dilution Range | WB 1:500-1:2000 IHC 1:100-1:300 ELISA 1:20000 |
| Formulation | PBS, 50% Glycerol, 0.5% BSA and 0.02% Sodium Azide. |
| Isotype | IgG |
| Storage Instruction | Store at -20°C for up to 1 year from the date of receipt, and avoid repeat freeze-thaw cycles. |

TARGET INFORMATION

| | |
|---------------------------|--|
| Gene ID | 5770 |
| Gene Symbol | PTPN1 |
| Uniprot ID | PTN1_HUMAN |
| Immunogen Region | The antiserum was produced against synthesized peptide derived from human PTP1B at amino acid range 16-65 30-110 |
| Specificity | PTPN1 polyclonal antibody (Tyrosine-Protein Phosphatase Non-Receptor Type 1) binds to endogenous Tyrosine-Protein Phosphatase Non-Receptor Type 1 at the amino acid region 30-110. |
| Immunogen Sequence | |



Immunohistochemistry analysis of paraffin-embedded human brain tissue, using PTP1B Antibody. The picture on the right is blocked with the synthesized peptide.



Western blot analysis of lysates from COS7 cells, treated with UV 30', using PTP1B Antibody. The lane on the right is blocked with the synthesized peptide.



Western blot analysis of various cells using PTP1B Polyclonal Antibody diluted at 1: 500